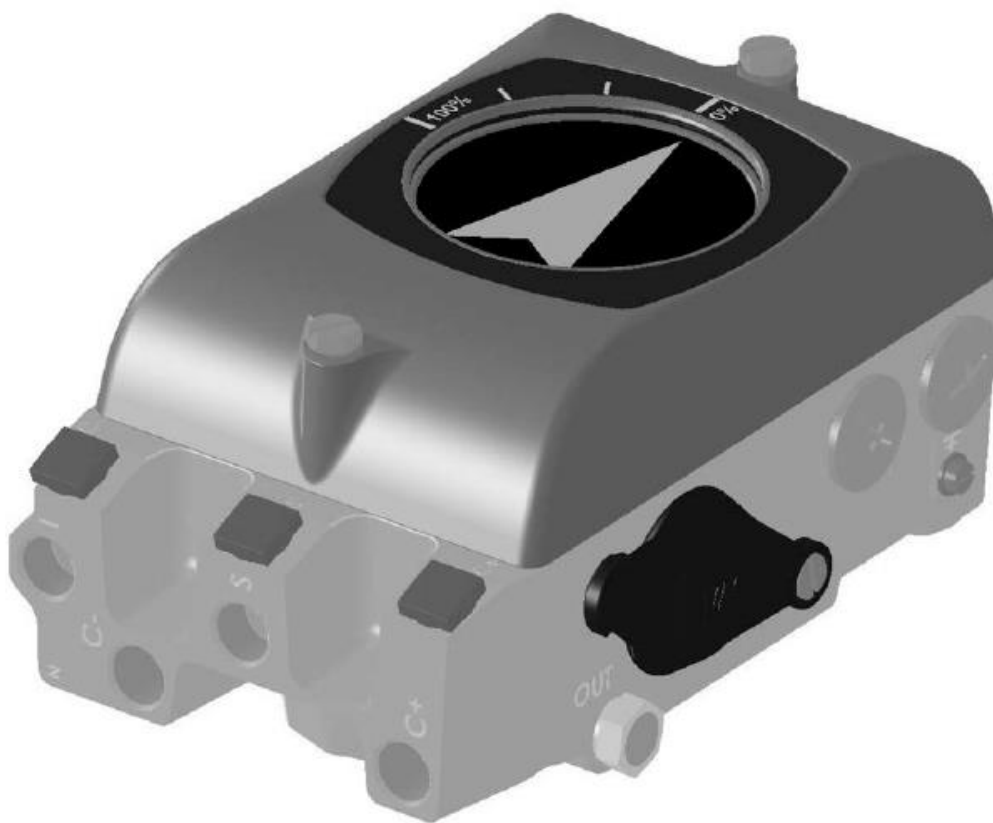


DeZURIK P200-P204 Positioners

with Feedback and External Options



Instruction **D10471**
February 2016

Instructions

These instructions are for use by personnel who are responsible for the installation, operation and maintenance of DeZURIK valves, actuators or accessories.

Safety Messages

All safety messages in the instructions are identified by a general warning sign and the signal word CAUTION, WARNING or DANGER. These messages indicate procedures to avoid injury or death.

Safety label(s) on the product indicate hazards that can cause injury or death. If a safety label becomes difficult to see or read, or if a label has been removed, please contact DeZURIK for replacement label(s).

⚠WARNING

Personnel involved in the installation or maintenance of valves should be constantly alert to potential emission of pipeline material and take appropriate safety precautions. Always wear suitable protection when dealing with hazardous pipeline materials. Handle valves which have been removed from service with suitable protection for any potential pipeline material in the valve.

Inspection

Your DeZURIK product has been packaged to provide protection during shipment; however, items can be damaged in transport. Carefully inspect the unit for damage upon arrival and file a claim with the carrier if damage is apparent.

Parts

Replaceable wear parts are listed on the assembly drawing. These parts can be stocked to minimize downtime. Order parts from your local DeZURIK sales representative or directly from DeZURIK. When ordering parts please provide the following information:

If the valve has a data plate: please include the 7-digit part number with either 4-digit revision number (example: 9999999R000) or 8-digit serial number (example: S1900001) whichever is applicable. The data plate will be attached to the valve assembly. Also, include the part name, the assembly drawing number, the balloon number and the quantity stated on the assembly drawing.

If there isn't any data plate visible on the valve: please include valve model number, part name, and item number from the assembly drawing. You may contact your local DeZURIK Representative to help you identify your valve.

DeZURIK Service

DeZURIK service personnel are available to maintain and repair all DeZURIK products. DeZURIK also offers customized training programs and consultation services. For more information, contact your local DeZURIK sales representative or visit our website at DeZURIK.com.

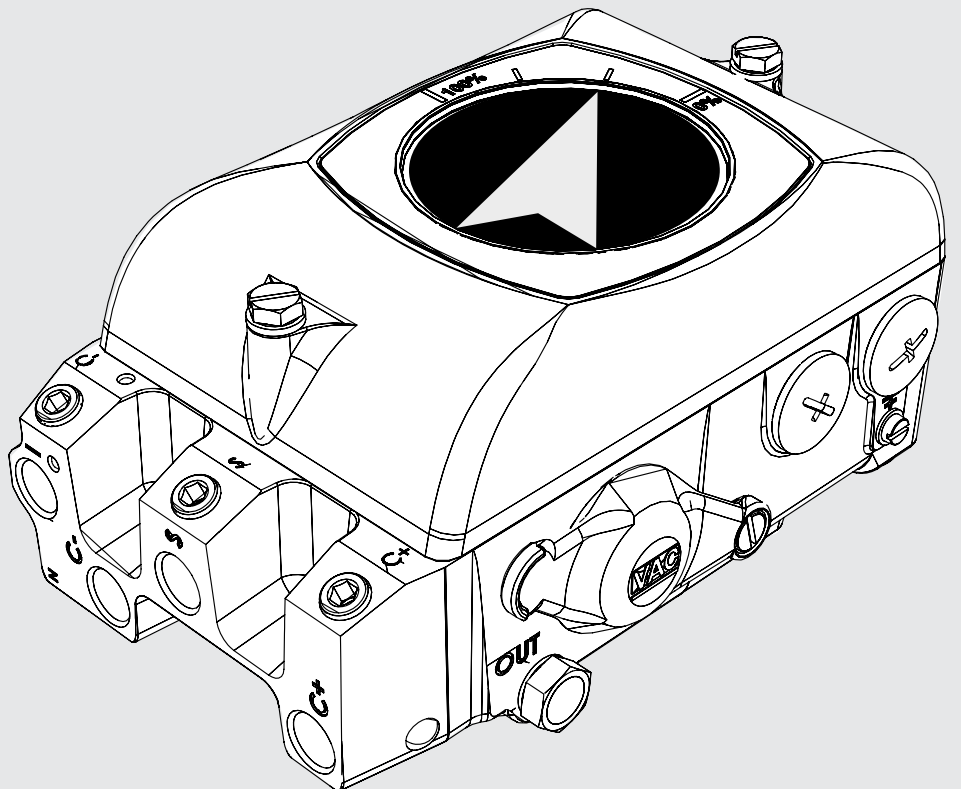


Valve Accessories & Controls

DeZURIK P200-P204 POSITIONERS

V200 POSITIONER

**Installation,
Operation and
Maintenance
Instruction**





V200 POSITIONER

www.vacaccessories.com

CONTENTS

1 INTRODUCTION	4
1.1 Principal of Operation	4
1.2 Product Identification	4
1.3 Air quality recommendations	5
1.4 Safety Instructions	5
2 INSTALLATION	6
2.1 Connections	6
2.2 General mounting instructions	7
2.2.1 Rotary actuators	7
2.2.2 Linear actuators	7
2.3 Installation instructions for rotary actuators	8
2.3.1 Double acting	8
2.3.2 Single acting	8
2.4 Installation instructions for linear actuators	9
2.4.1 Double acting	9
2.4.2 Single acting	9
2.5 Cam	10
2.5.1 Adjustments	10
2.5.2 Cam specifications	10
2.6 Spindle(Drive)	11
2.6.1 Spindle removal	11
2.6.2 Spindle mounting	11
2.7 Installing IP converter	12
2.7.1 Internal IP converter	12
2.8 4-20 mA connection	13
2.8.1 Connecting the control signal	13
2.8.2 Checking the control signal	13
2.8.3 Bench test with calibrator	13
2.8.4 Checking the IP internal circuit	13
2.9 Calibration	14
2.10 Front cover and Indicator	15
2.10.1 Removing the front cover	15
2.10.2 Removing flat indicator cover	15
2.10.3 Removing Dome indicator cover	15
2.10.4 Changing the sealings in the front cover	15
2.10.5 Installing flat indicator cover	16
2.10.6 Installing Dome indicator cover	16
2.10.7 Removing the indicator	16
2.11 Main supply filter for IP converter	17
2.12 Pilot valve remove and install	18
--- Intentionally blank	19
3 SPARE PARTS	20
3.1 Exploded drawing	20
3.2 Spare parts list	21
4 SPECIFICATIONS	22
4.1 Specifications V200	22
5 DIMENSION	23
5.1 V200 P/E std	23

1 INTRODUCTION

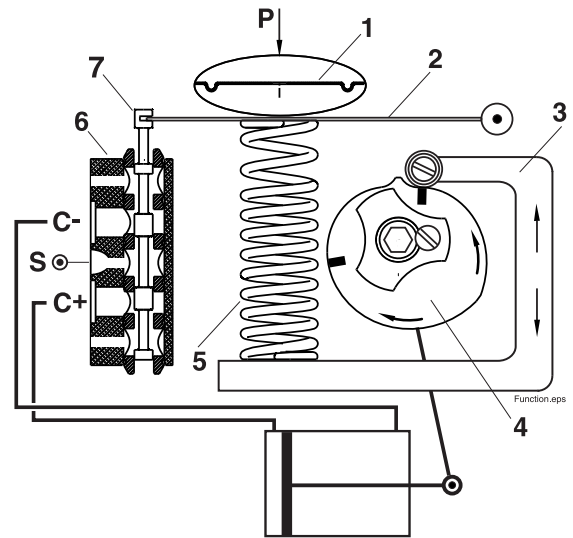
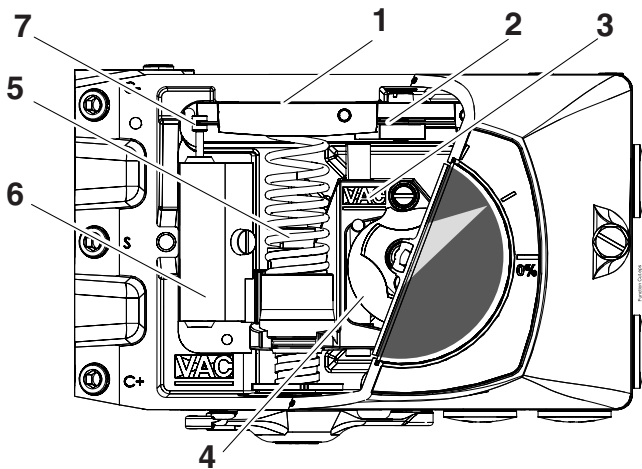
1.1 Principal of Operation

The V200 incorporates the force balance principal of operation. The desired value, in the form of pressure, affects the membrane(1)with the force that is created and transferred to the balance arm(2). The opposing force, which represents the actual control value, is provided by the feedback spring(5) and creating force in the opposite direction on the balance arm(2). The feedback spring, resting on the feedback arm(3), is positioned by the shape and response of the cam. The cam(4) is connected to the cylinder's (actuator) piston rod via the drive. The pilot valve(6) is connected to the balance arm and follows the balance arm's movement.

The system is stable when the spool(7) is in the neutral position and the forces that affect the balance arm is in equilibrium.

As soon as a signal change occurs or a change in the position of the valve/actuator package occurs, the "force balance" is also changed and the spool responds. Air immediately begins to flow into the part of the actuator (C+ or C-) which allows the feedback mechanism to return the spool to the neutral position.

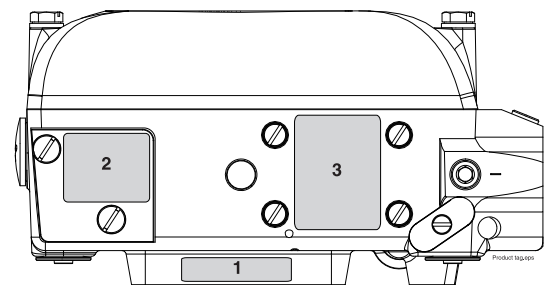
The system is self-stabilizing and searches for a steady state position.



1.2 Product identification

The V200 identification tags, Serial number tag(1), product model tag(2) and feedback option tag(3), are placed as shown.

The product model tag contains information on control signal, maximum working pressure and temperature ranges. Other information can be shown depending on the model.





V200 POSITIONER

www.vacaccessories.com

1.3 Air quality recommendations

Poor air quality is one of the main causes of premature functional problems with pneumatic and electro pneumatic equipment. The pilot valve and IP-converter are precision instruments, and are therefore the most sensitive parts of the positioner.

a) Water in the supply air is a natural occurrence. This happens when air is compressed. The compression heats the air and the natural degree of water in the air can remain as moisture. When the air cools in pipes etc. the moisture condenses and becomes liquid water. Large quantities can build and sometimes flood small water separators. This excess water will eventually reach the control valve and positioner. This can cause corrosion damage to the IP converter, causing the unit to malfunction.

We strongly recommend the use of water separators with adequate capacity. Coalescing filters from a reputable manufacturer is an inexpensive way to help prevent unit malfunctions or failures, and add life to the product. These filters remove particles and moisture from air lines.

b) Oil in the supply air usually is from the main compressor. Oil can clog the small nozzles and disturb the flapper in the IP-converter. It can also cause the spool to “drag” within the pilot valve. The result is poor control or in the worst case, failure.

c) Particles in the air usually occur because of corrosion. Dirt and particles can block the small nozzles of the IP-converter. They can also cause the pilot valve to malfunction. The unit may completely fail.

To ensure normal operational safety with VAC positioner products, we recommend that a water separator and a <80 micrometer filter are mounted as close to the product as possible. If large amounts of oil are present an oil separator should be installed as well.

To further increase operational safety, we recommend that the working air is clean, dry and free of moisture, water, oil, particles and other contaminants, in accordance with the ISA Standard ISA S7.3-81.

1.4 Safety Instructions



CAUTION: Beware of moving parts when positioner is operated!



CAUTION: Beware of parts with live voltage!

A voltage, which is normally not dangerous, is supplied to the positioner. Avoid touching live parts and bare wires as well as short circuiting live parts and the housing.



CAUTION: Do not dismantle a pressurized positioner!

Dismantling a pressurized positioner will result in uncontrolled pressure release. Always isolate the relevant part of the pipeline. Release the pressure from the positioner and the piping. Failure to do this may result in damage or personal injury.



CAUTION: Do not exceed the positioner performance limitations!

Exceeding the limitations marked on the positioner may cause damage to the positioner, actuator and valve. Damage or personal injury may result.

2. INSTALLATION

2.1 Connections

S – Supply air

V200P: max. 145 PSI / 1 MPa

V200E: 23 - 145 PSI / 0,15 -1 MPa

I – Input, pressure signal

V200P: 3-15 PSI / 20-100 kPa

V200E: Plugged

I_E – Input, current signal

V200E: 4-20 mA (Ri max 250 ohm)

V200P: Plugged

C+ - Actuator connection + stroke

C- - Actuator connection - stroke

Optional air outlet, (normally plugged)

C+ (2) - Actuator connection + stroke

C+ (2) - Actuator connection - stroke

OUT - All air from the actuator, IP and positioner is vented through this port.
Standard equipped with a bug screen/silencer

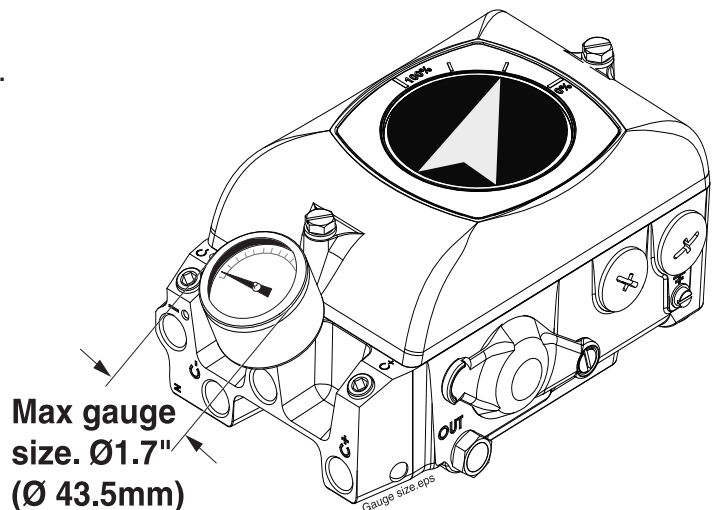
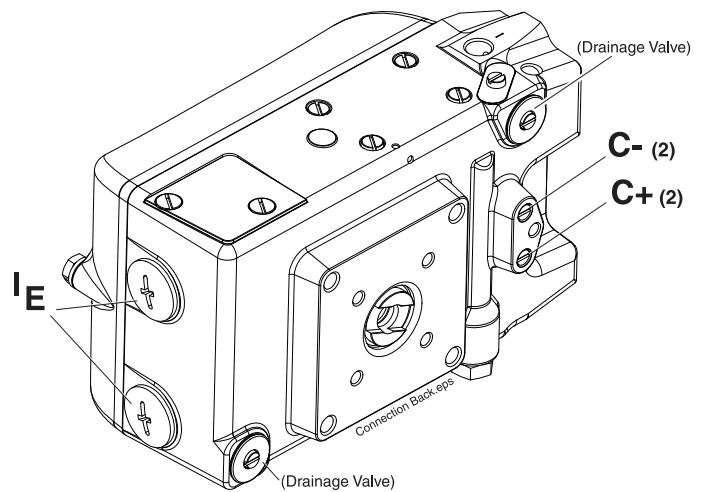
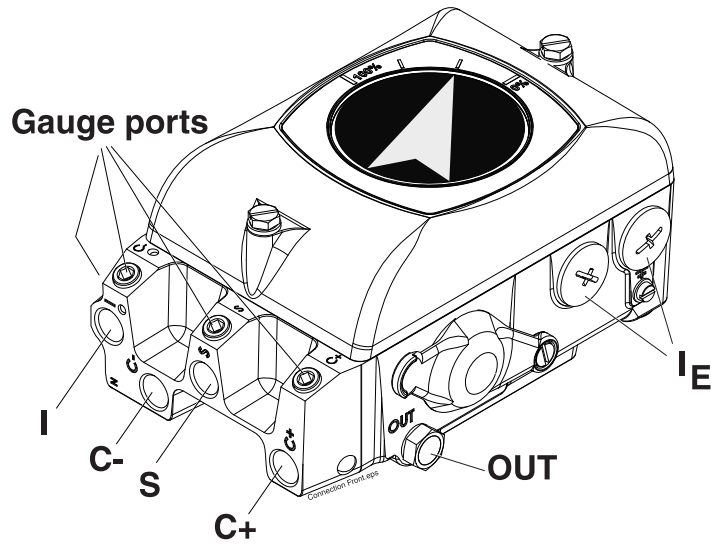
Air connections for male 1/4" NPT or G 1/4".

Gauge connections for male 1/8" NPT or G1/8".

Cable entry for male 1/2" NPT or M20 cable fittings.

The appropriate threads are indicated by a N (NPT) or G on the air connection side of the positioner.

Gauge ports I, C+, C- and S are factory plugged.
Remove plugs and replace with gauges.



The **I_p** connection must be plugged in V200E.
The **I_E** entries should be plugged in V200P

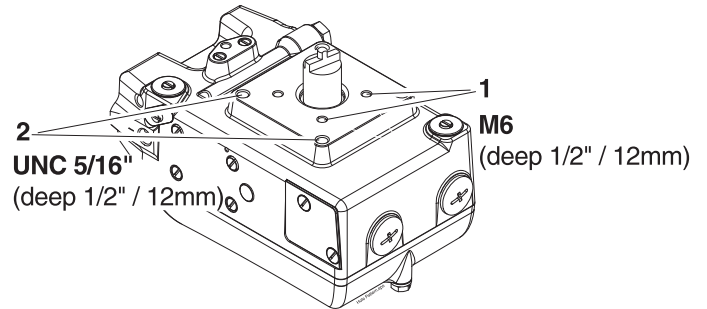


V200 POSITIONER

www.vacaccessories.com

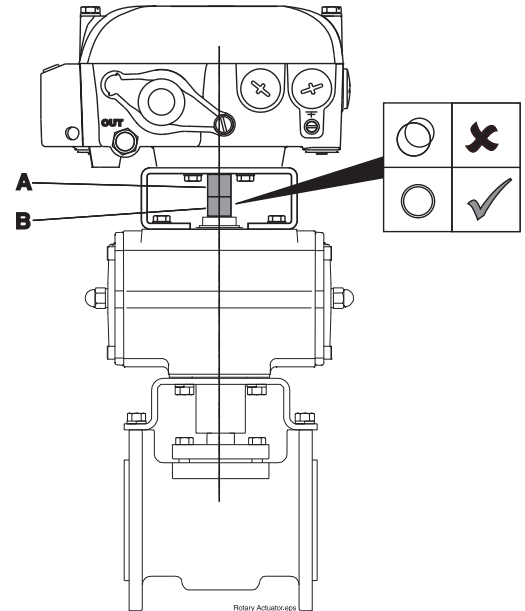
2.2 General mounting instructions.

The V200 has the ISO F05 hole pattern(1) and 2¼" x 2¼" hole pattern(2) for mounting kits.



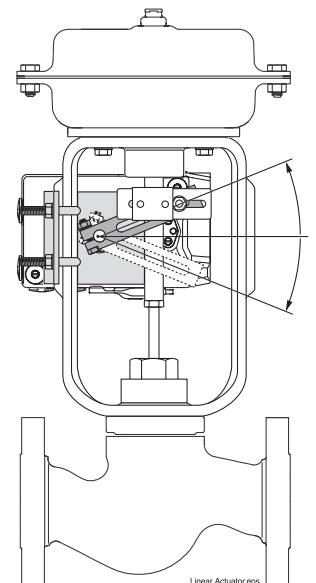
2.2.1 Rotary actuator

The VAC V200 has a very stable and properly sized drive shaft bearing. However, the positioner drive(A) should be aligned properly to the rotary actuator spindle(B). A relatively small error combined with a rigid coupling can create very powerful radial forces, which can overload and cause premature wear.



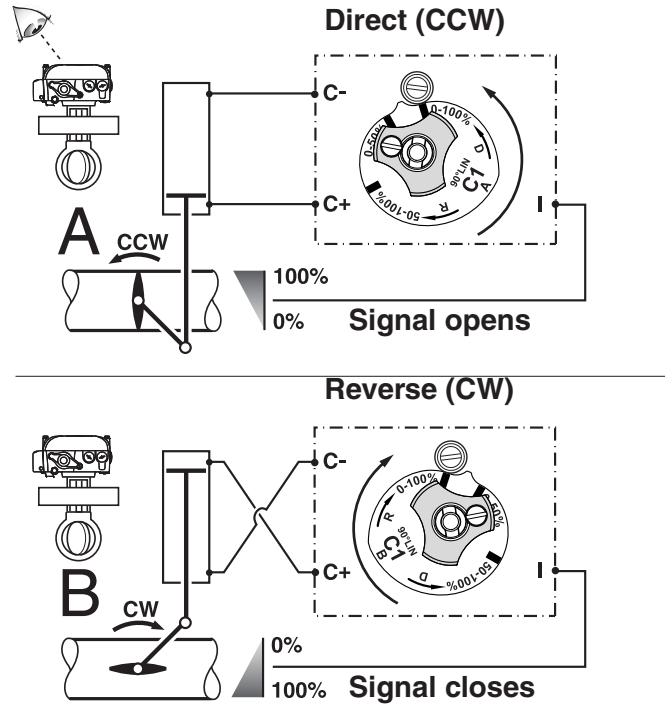
2.2.2 Linear actuator

When mounting to linear actuators, the positioner should be attached in such a way that its drive is in the center (mid stroke) of the actuator's stroke. Proper installation and alignment will minimize linearity error.

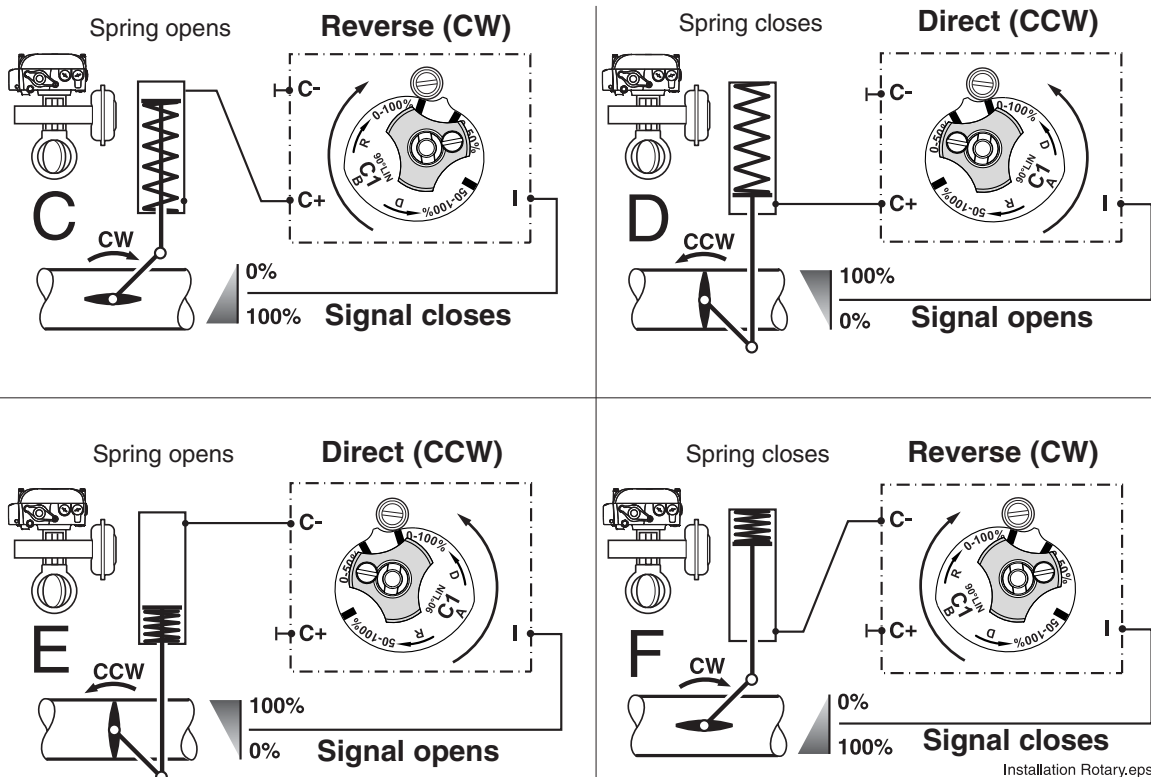


2.3 Installation instructions for rotary actuators

2.3.1 Double acting

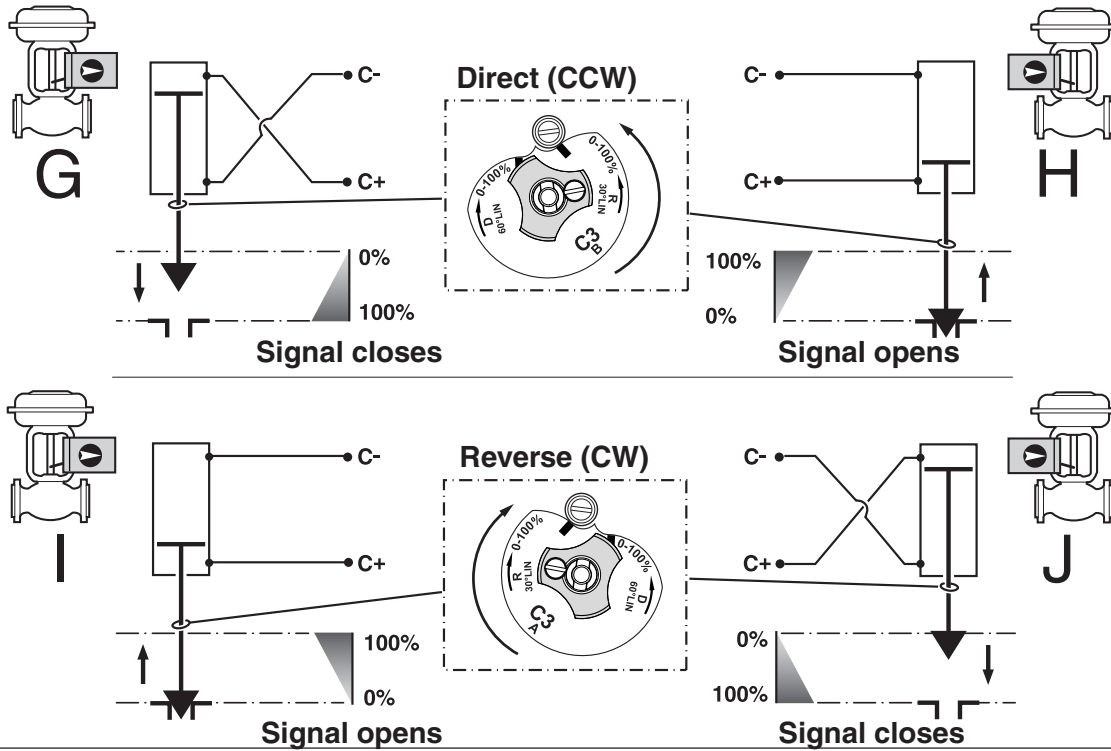


2.3.2 Single acting

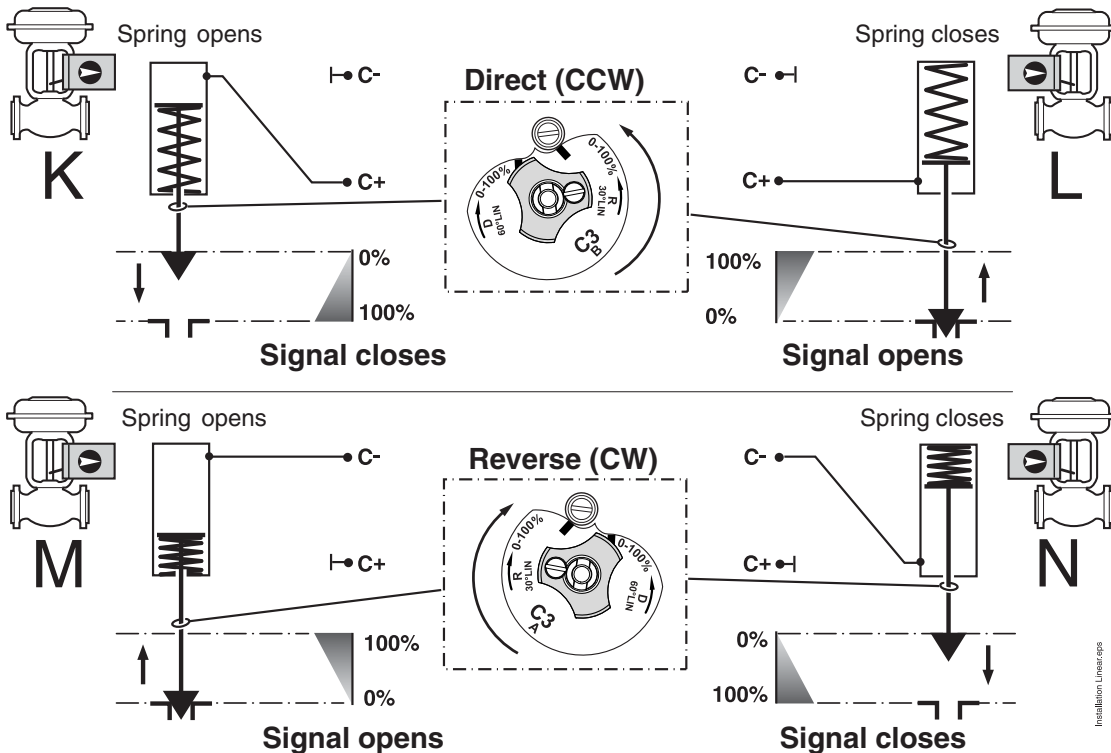


2.4 Installation instructions for linear actuators

2.4.1 Double acting



2.4.2 Single acting



2.5 Cam

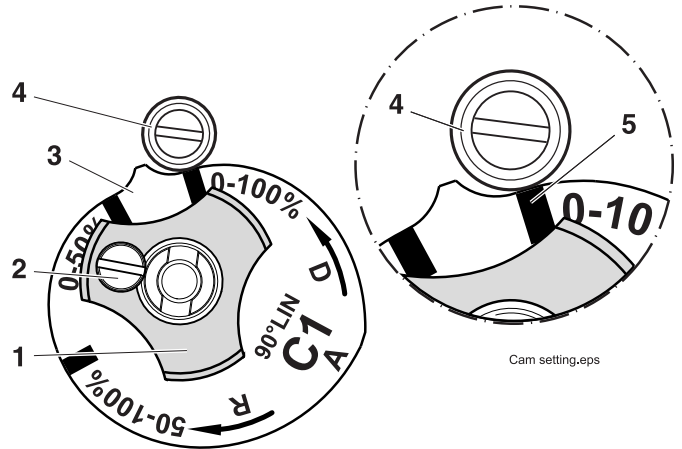


The V200 is standard shipped with the C1-cam, factory set for 90° ±1°, direct (CCW) turning.

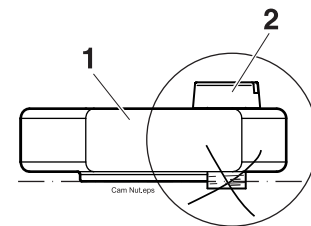
2.5.1 Adjustments

Remove the front cover and indicator.
(see page 15)

1. Loosen the locking screw(2) and the cam nut(1).
2. Stroke the valve/actuator to the stop/end position at 0% input.
3. Turn the cam(3) so that the index mark(5) for the selected curve aligns with the ball bearing(4). A small gap between the roller and the cam tip is desirable.
4. Tighten the cam nut by hand(1).
Check that the locking screw(2) is still loose.
(if not, loosen the locking screw slightly and tighten the nut again).
5. Tighten the locking screw(2).
Do not tighten cam nut with screw(2) down.



Cam setting.eps



Cam Nut.eps

2.5.2 Cam specifications C1

Index mark / Starting point of rotation *

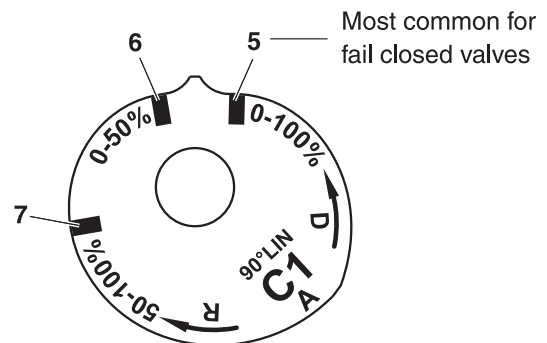
5. 90° Linear 0-100% CCW
6. 180° Linear 0-100% CW
6. 90° Linear 0-50% CW split range
7. 90° Linear 50-100% CW split range
8. 90° Linear 0-100% CW
9. 180° Linear 0-100% CCW
9. 90° Linear 0-50% CCW split range
10. 90° Linear 50-100% CCW split range

*Increasing signal rotation.

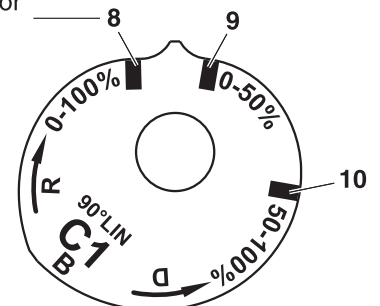
Most valves rotate CW to close / CCW to open



When field reversing action of positioner tubing must be reversed as well (see page 7 and 8)



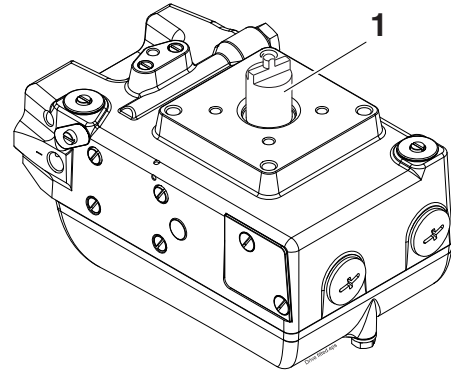
Most common for fail open valves



Cam Marking.eps

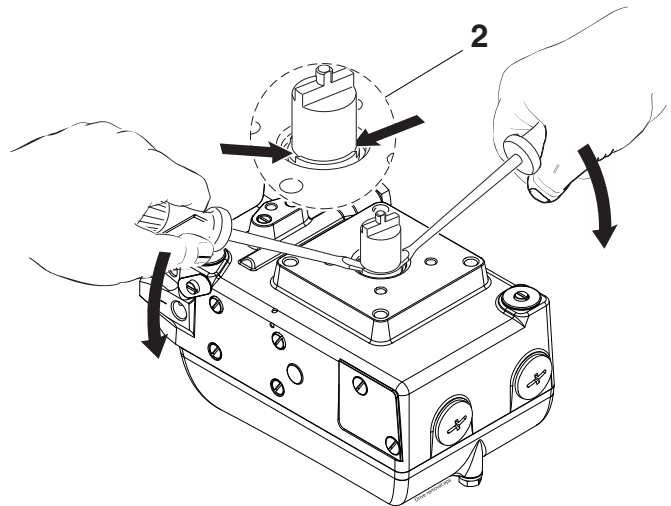
2.6 Spindle (Drive)

VAC offers a variety of spindles/drives(1), suitable for the most frequently used actuator types.



2.6.1 Spindle Removal

Release the spindle/drive by prying with two screwdrivers, equally under the edges(2) of the spindle/drive, using the housing as fulcrum. The spindle has a snap ring that is “released” with the equal pressure.



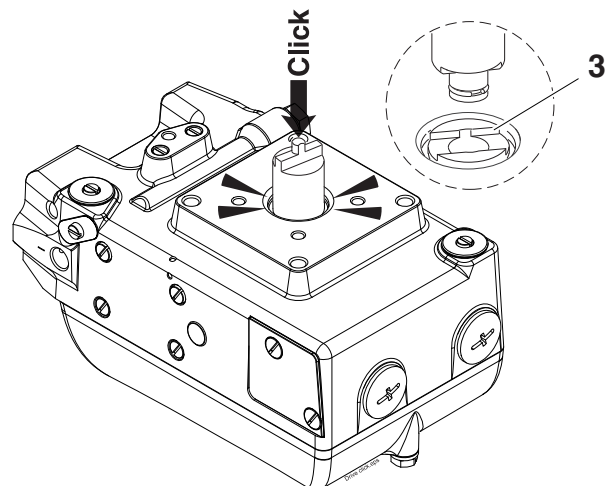
2.6.2 Spindle Mounting

Press the spindle down into the spindle shaft hole.

Turn the flats(3) into place and press down.

Check to see that the spindle/drive is set securely in place.

To install the spindle correctly will result in two “snaps” of the spindle into the housing.

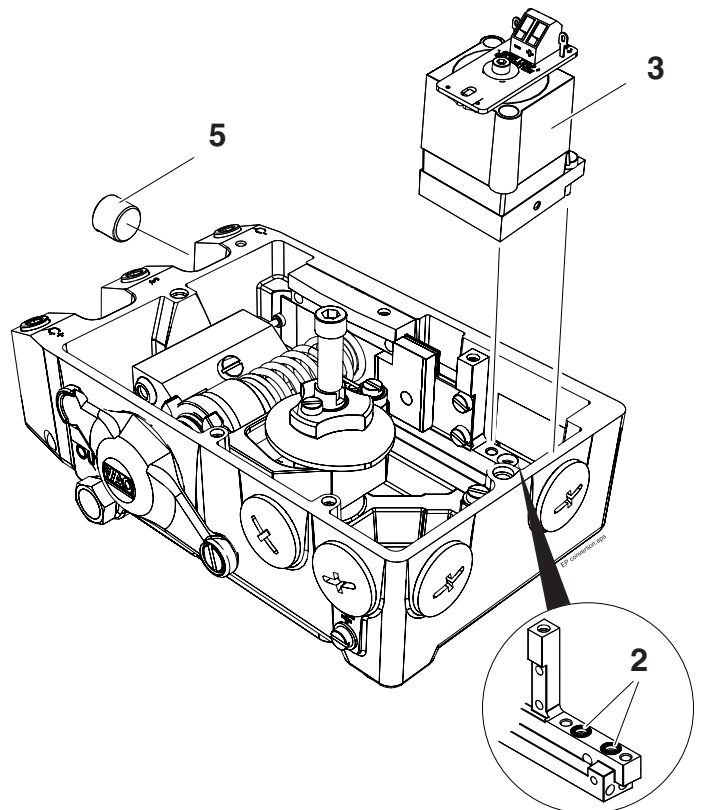
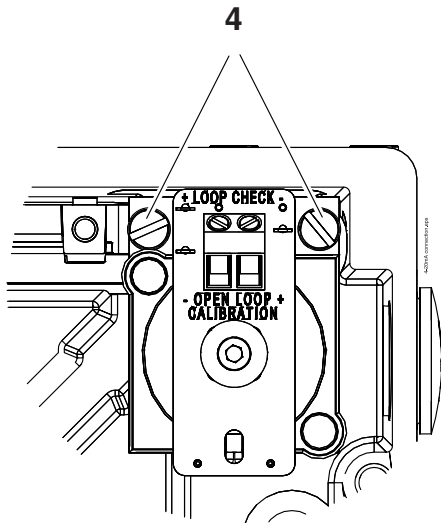
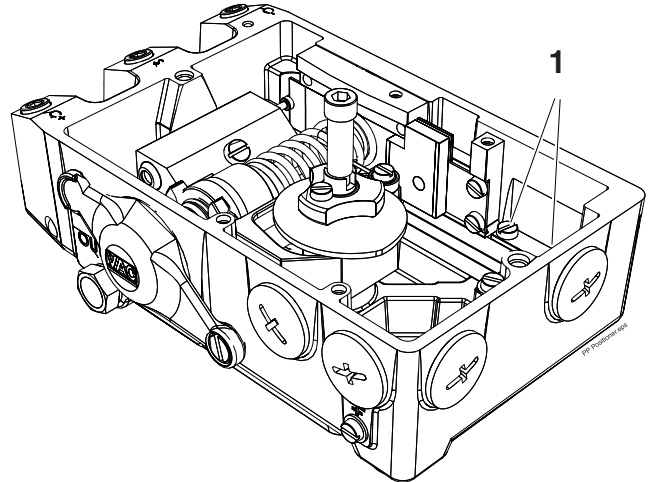


2.7 Installing IP converter

2.7.1 Internal IP Converter

Remove the front cover and indicator.
(see page 15)

1. Loosen the two screws that secure the pneumatic sealing plate(1) and remove the plate.
2. Make sure the two O-rings(2) are still in the positioner housing.
3. Install the IP converter(3) and tighten the screws(4).
4. Install the 1/4" plug(5) in the port marked I.



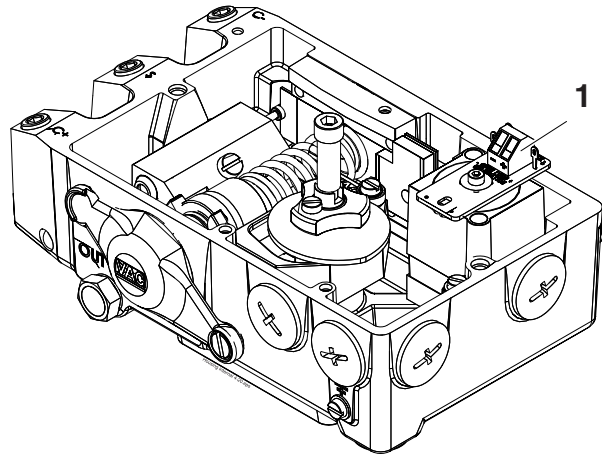
2.8 4-20 mA connection

2.8.1 Connecting the control signal

Remove the front cover and indicator.
(see page 15)

Terminal block(1) is now easily accessible. Connect the cables to their respective pole.

Maximum cable size AWG 13 (2,5 mm²)



2.8.2 Checking the control signal

The control signal can be checked without having to break the signal loop. This is done by connecting a low ohmic ampere meter over the test points(2).

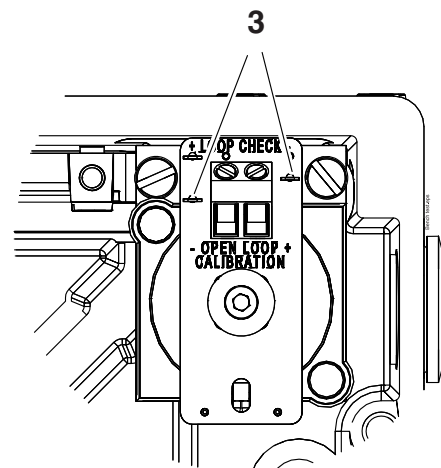
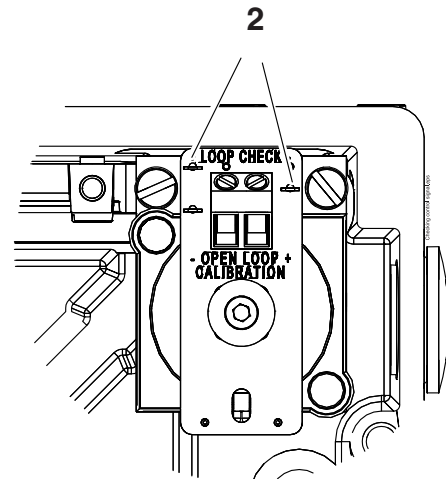
2.8.3 Bench test with the calibrator

When bench testing, it is possible to connect the control signal (signal generator clips) to the two points(3), thus eliminating the need for temporary leads.

2.8.4 Checking the IP internal circuit

With an ohm meter connected over the two test points(3) it is possible to check the IP's internal circuit.

At room temperature the meter should read ~150 - 200 Ohms. No reading indicates an internal circuit break and the IP converter needs replacement.



The IP converter is factory-adjusted. No extra range or zero adjustments are necessary.

2.9 Calibration



The V200 is delivered factory calibrated 0-100 % $\pm 1\%$.

Calibration procedure

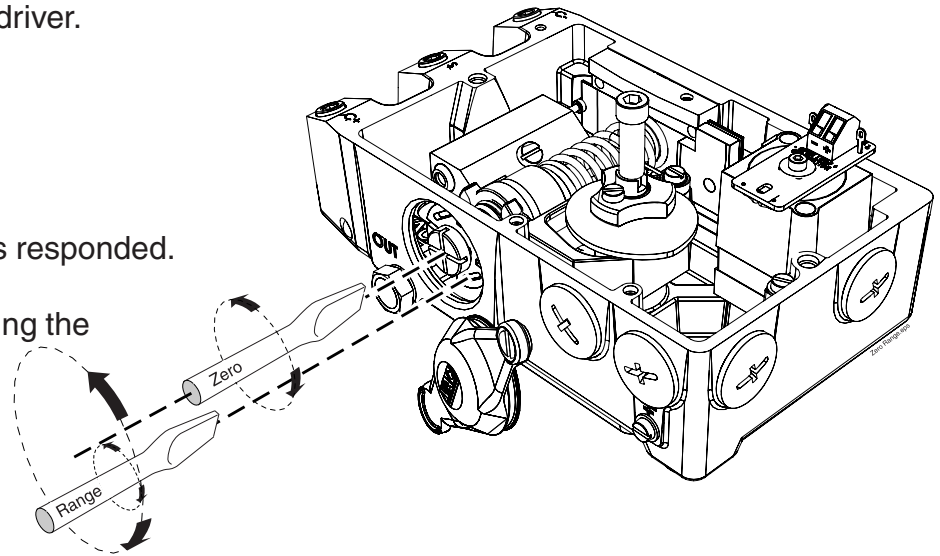
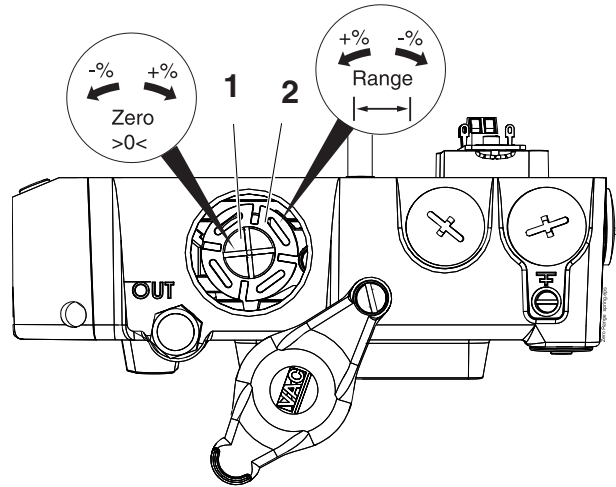
Zero position

Note: Always set zero first!

1. Set 0% input signal.
2. Wait until the valve/actuator has responded.
3. Adjust the zero position by turning the zero screw(1), with a screwdriver.

Range (Span)

4. Increase to 100% input signal.
5. Wait until the valve/actuator has responded.
6. Adjust the range (span) by turning the range wheel(2).



Check the zero position

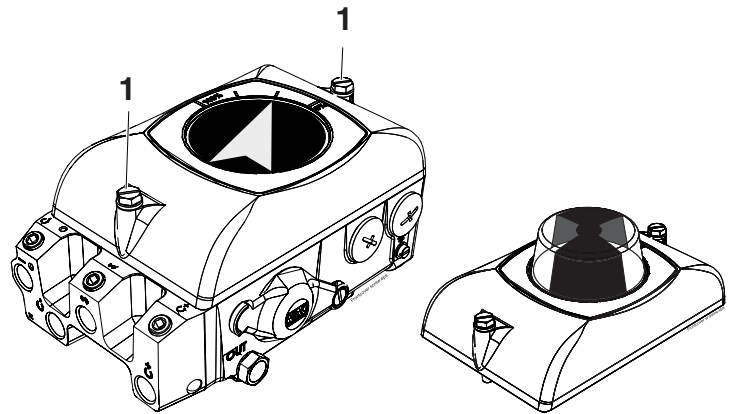
Make fine adjustments if necessary.*

*When split ranging, where zero can be a signal other than 0%, the steps 1-6 must be repeated until the desired setting has been reached.

2.10 Front cover and indicator

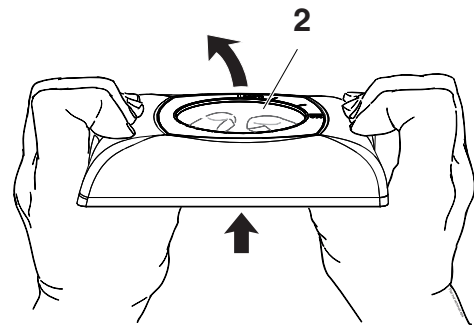
2.10.1 Removing the front cover

Loosen the two screws(1) and remove the front cover.



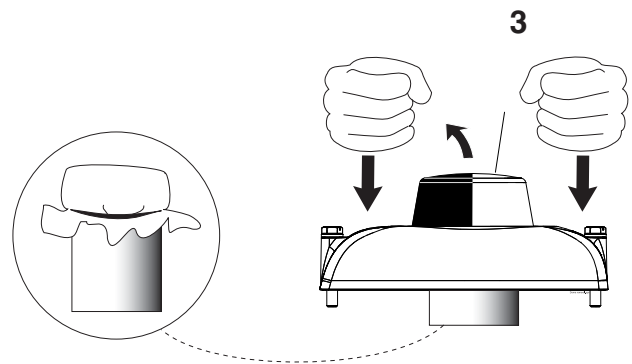
2.10.2 Removing flat indicator cover

With the main cover removed, the indicator cover(2) (clear cover) can be removed with pressure from the backside.



2.10.3 Removing Dome indicator cover

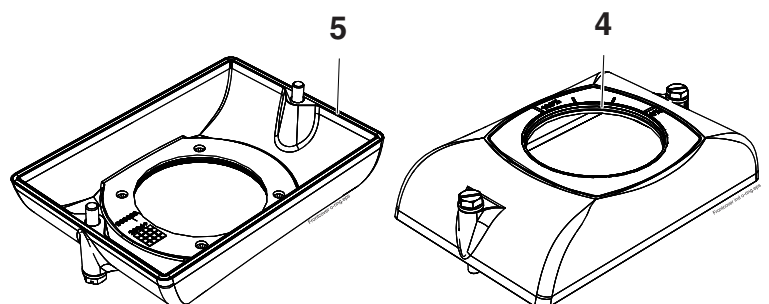
Due to the combined depth of the dome indicator and V200 cover, care should be exercised when removing the dome. It is recommended that something sturdy and protective be placed under the dome and equal pressure applied to the cover. The dome should release without damage.



2.10.4 Changing the sealing in the front cover

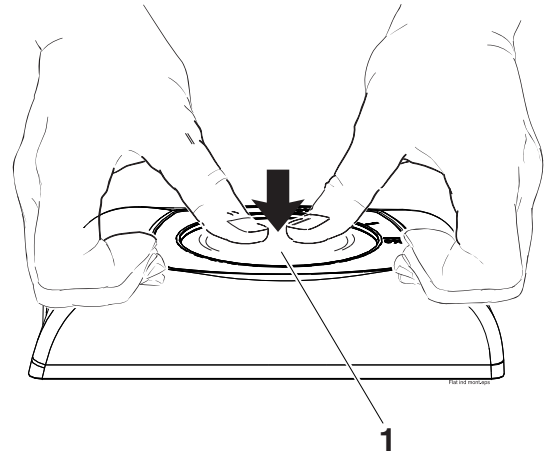
Remove the O-ring(4) and replace if needed.

Check the O-ring(5) on the backside of the front cover and replace if needed.



2.10.5 Installing flat indicator cover

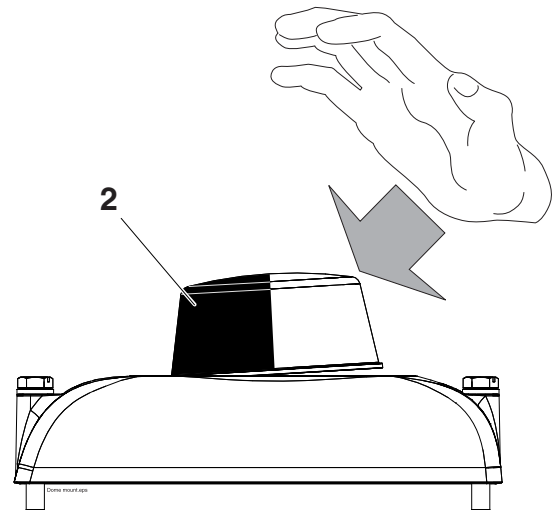
Place the indicator cover(1) with its rounded side facing down toward the front cover. Press in the center of the indicator cover until it snaps into place.



2.10.6 Installing Dome Indicator cover

Place the dome indicator cover(2) so that it is aligned with its seat in the front cover on one side. Use inside of palm and give the indicator cover a hard distinctive punch.

Adjust the display position by turning the indicator cover(2) to its desired position-it is a reasonably tight friction fit.



2.10.7 Removing the indicator

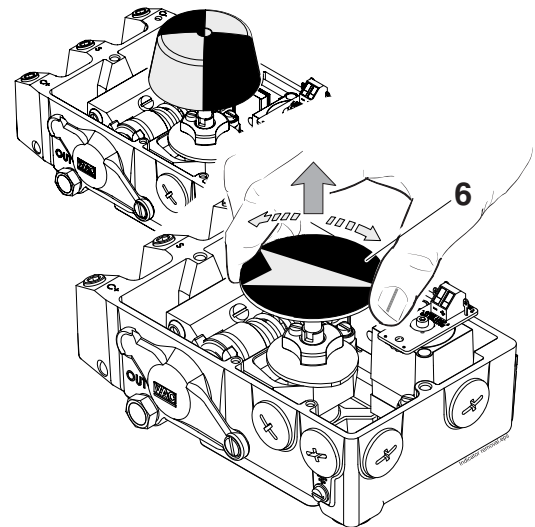
Pull the indicator(6) straight up; it is a friction fit.

Important Note!

Note the indicator's position so it can be installed in the same position.

Installing the indicator

Install the indicator in place over the drive shaft and press it straight down. Be sure to press the indicator completely down so that it does not interfere with the indicator cover (clear cover). Turn the indicator to the proper display position.



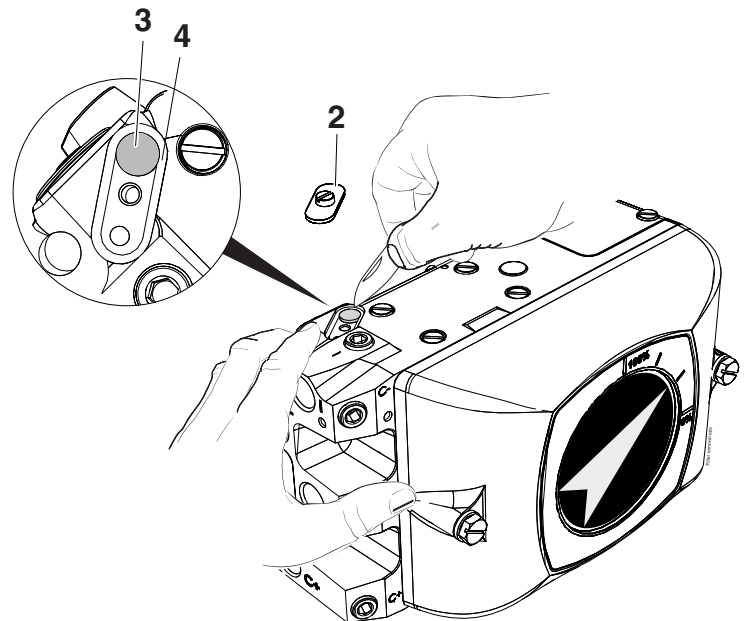
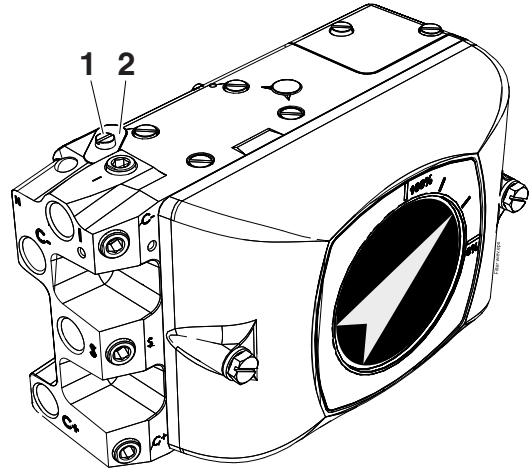
2.11 Main supply filter for IP converter

Changing the filter

1. Turn off or disconnect the main air supply.

Should air supply not be disconnected or turned off, the pressure may cause the filter cover to eject from the unit.

2. Loosen the screw(1) and remove filter cover(2)
3. Cautiously remove the filter (3) with a sharp pointed object e.g. a pocket knife.
4. Press the new filter(3) into the housing.
5. Check the O-ring(4) and replace if needed.
5. Install the filter cover(2) and tighten the screw(1)



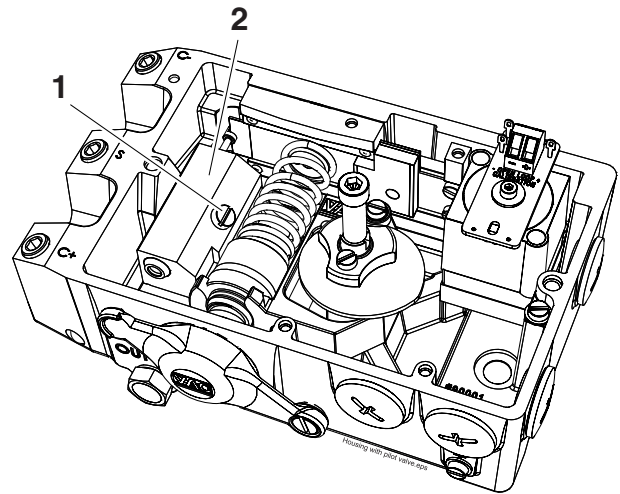
If the filter(3) shows traces of oil or water, check the water/oil separator in the supply line.

Oil and water can cause functional problems in the IP converter.

2.12 Pilot valve

Removal

Remove the front cover and indicator. (see p.15)
 Loosen the pilot retaining screw(1).
 Lift the pilot valve(2) straight up.



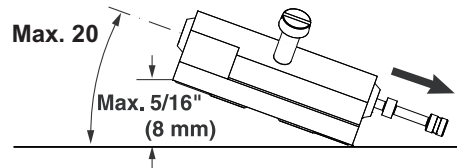
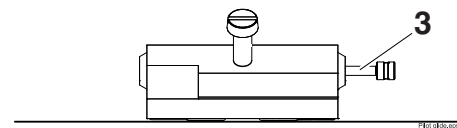
Cleaning

Remove the spool(3) from the valve housing

Clean the parts with a soft cloth and pipe cleaner using alcohol, acetone or something similar.

Blow dry with clean, pressurized air.
 Install the spool back in the valve housing.

Place the spool in its “working position”.
 (all four pistons inside the valve housing)
 Slowly lift the pilot valve in one end.
 The spool should start to glide before the angle exceeds 20°. (see sketch)



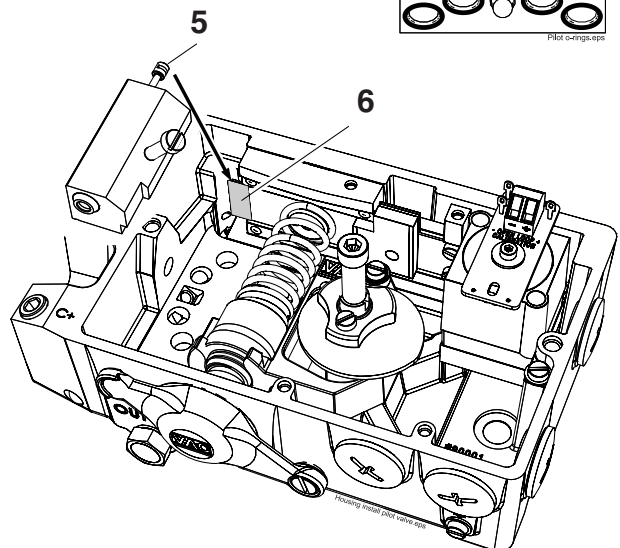
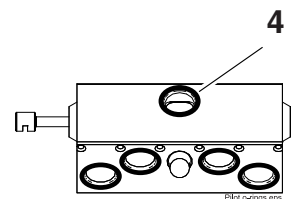
If any of the parts show signs of wear, we recommend replacing with a new pilot valve assembly.

The pilot valve’s parts are matched to attain the best possible performance. Mixing of parts can result in high excessive bleed and/or poor function.

Install Pilot

Check the pilot valve’s five O-rings(4).

Be sure that the spool’s “gap”(5) fits over the balance arm(6) and place the valve straight down into place.
 Tighten the screw(1).





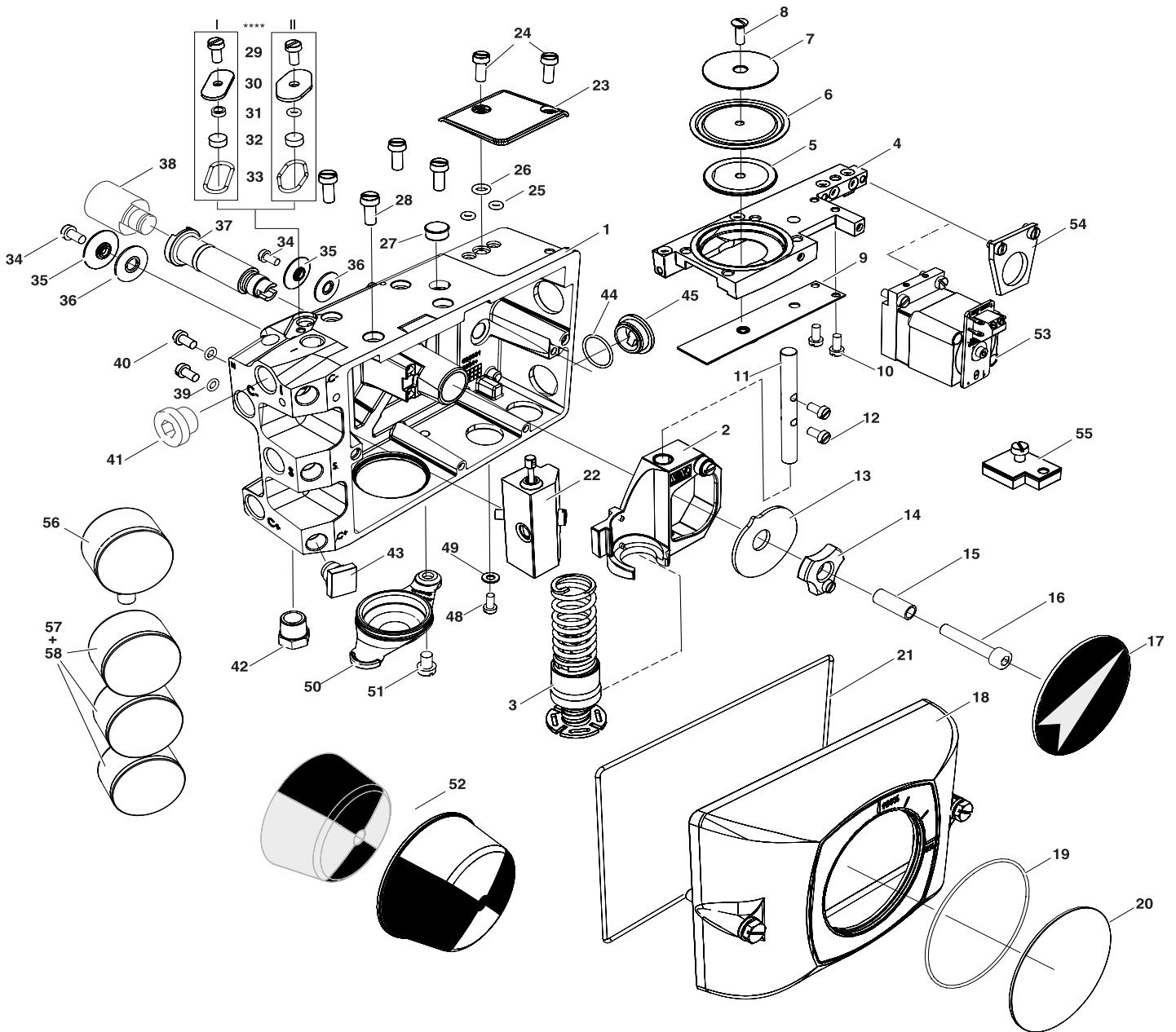
V200 POSITIONER

www.vacaccessories.com

Intentionally blank

3. SPARE PARTS

3.1 Exploded drawing





V200 POSITIONER

www.vacaccessories.com

3.2 Spare parts list

Item	Description	Material	Part no	Qty	Item	Description	Material	Part no	Qty
1	Housing	Aluminum, painted	n/a	1	30****	Filter Cover, Rhombic II	Stainless Steel	90032r1	1
	- Bearing 15x8		171508	2	29	- Screw ISO 1207 M4x12	Stainless Steel	120705126	1
2	Feedback Arm Assembled		91002	1	31	- O-ring Ø3,1x1,6 NBR70	Nitrile Rubber	OR3,1x1,6NBR	1
	- Feedback Arm	Aluminum, painted	90006	1	32	- Main Filter	Plastic <PP>	90033	1
	- Ball Bearing	Stainless Steel	100404	1	33	- O-ring Ø18,1x1,6 NBR70	Nitrile Rubber	OR18,1x1,6NBR	1
	- Screw ISO 1207 M4x12	Stainless Steel	1207040812	1	34	Screw ISO 1207 M4x8	Stainless Steel	1207040808	2
	- Bearing 8x8		100808	2	35	- Relief Valve Washer	Aluminum, Anodized	90034	2
3	Feedback Spring Assembled		91018	1	36	Rubber Washer	Silicone Rubber	90035	2
	- Spring Nut	Aluminum, Anodized	90012	1	37	Drive Shaft	Stainless Steel	90029	1
	- Wrist Pin	Stainless Steel	90013	1		- O-ring Ø12x2 NBR70	Nitrile Rubber	OR12x2NBR	1
	- Range Screw	Aluminum, Anodized	90014	1		- O-ring Ø15x2 NBR70	Nitrile Rubber	OR15x2NBR	1
	- Range Nut	Aluminum, Anodized	90015	1	38	Spindle*	Stainless Steel	90092	1
	- Span Wheel	Stainless Steel	90016	1		- Circlip spindle	Stainless Steel	90093	1
	- Zero Wheel	Aluminum, Anodized	90017	1	39	O-ring Ø4x1,5 NBR70	Nitrile Rubber	OR4x1,5NBR	2
	- Feedback Spring	Stainless Steel	90018	1	40	Screw ISO 1207 M4x8	Stainless Steel	1207040808	2
	- Screw ISO 1207 M4x50	Stainless steel	1207045050	1	41	Plug 1/4"	Plated Brass	261014	1
	- O-ring Ø15x1 NBR70	Nitrile Rubber	OR15x1NBR	1	42	Bug Screen / Silencer	Plated Brass	400148	1
	- Retaining Ring AV12	Steel	91050041	1	43	Plug 1/8"	Plastic <PA>	90103	4
	- Washer DIN 6904-5,4	Steel	6904054	1	44	- O-ring Ø18,1x1,6 NBR70	Nitrile Rubber	OR18,1x1,6NBR	4
	- Washer DIN 7089-4	Stainless Steel	70894	1	45	Plug NPT1/2" / M20	Plastic <PA>	92017	4
4	Membrane Plate	Aluminum, Anodized	92089	1	48	Screw ISO 1207 M4x8	Stainless Steel	1207040808	1
	- O-ring Ø3x2 NBR70	Nitrile Rubber	OR3x1NBR	6	49	Washer ISO 7089-4	Stainless Steel	70894	1
5	Membrane piston	Aluminum, Anodized	90010	1	50	Zero Plug	Nitrile Rubber	90037	1
6	Membrane	Nitrile Rubber	90022	1	51	Screw ISO 1207 M6x8	Stainless Steel	1207060808	1
7	Membrane Washer	Stainless Steel	90009	1	52	Dome Indicator B/Y Kit		93008	1
8	Screw ISO 2010 M4x12	Stainless Steel	2010041212	1		- Dome Indicator B/Y	Plastic <PC>	92062	1
9	Balance Arm	Stainless Steel	91003	1		- Circlip DIN 47112	Stainless Steel	47112	1
10	Screw ISO 1207 M4x8	Stainless Steel	1207040808	2		- Dome Indicator Cover	Plastic <PC>	90044	1
11	Guide Pin	Stainless Steel	90024	1	53	IP converter		91006	1
12	Screw ISO 1207 M4x14	Stainless Steel	1207041414	2		- Screw ISO 1207 M4x30	Stainless Steel	1207041212	2
13	Cam*	Stainless Steel	92031	1		- Spacer	Aluminium		2
14	Cam Nut	Aluminum, Anodized	90030	1	54	V200 E to P Conversion Plate		91000	1
	- Screw ISO 1207 M4x8	Stainless Steel	1207040808	1		- Sealing plate	Aluminum, Anodized	90023r2	1
15	Indicator Screw Spacer	Aluminum, Anodized	90053	1		- Screw ISO 1207 M4x8	Stainless Steel	1207040808	2
16	Screw ISO 4762 M6x35	Stainless Steel	4762063535	1	55	Stability Kit**		93027	1
17	Indicator Arrow	Plastic <PC>	90049A	1		- Stability Plate Upper	Aluminum, Anodized	90039	1
	Indicator Flag	Plastic <PC>	90049F	1		- Stability Plate Lower	Aluminum, Anodized	90040	1
	- Circlip DIN 47112	Stainless Steel	47112	1		- Screw ISO 1207 M5x12	Stainless Steel	1207051212	1
18	Front Cover Assembled		91001	1	56***	Gauge 0-30psi Bottom mount	Aluminum	400502	1
	- Front Cover	Aluminum, painted	90004	1	57***	Gauge 0-30psi Back mount	Aluminum	400500	1
	- Screw ISO 4017 M6x40	Stainless Steel	4017064040	2	58***	Gauge 0-160psi Back mount	Aluminum	400501	3
	- Washer ISO 7089-6	Stainless Steel	708906	2					
	- O-ring Ø5x1,5 NBR70	Nitrile Rubber	OR5x1,5NBR	2					
	- Front label 0-90-0 (std)*	Plastic <PC>	92018	1					
19	O-ring Ø70x1,5 NBR70	Nitrile Rubber	OR70x1,5NBR	1					
20	Indicator cover	Plastic <PC>	90038	1					
21	O-ring Ø160x2 NBR70	Nitrile Rubber	OR160x2NBR	1					
22	Pilot Valve SG (Std)		91010	1					
	Pilot Valve HG		91008	1					
	Pilot Valve SHG		91009	1					
	- O-ring Ø8x1,5 NBR70	Nitrile Rubber	OR8x1,5NBR	5					
	- Screw ISO 1207 M5x30	Stainless Steel	1207053030	1					
23	Cover plate	Aluminum, painted	90080	1					
24	Screw ISO 1207 M5x14	Stainless Steel	1207051414	1					
	- Mylar Washer	Plastic <PA>	90048	1					
25	O-ring Ø3x2 NBR70	Nitrile Rubber	OR3x2NBR	2					
26	O-ring Ø5x2 NBR70	Nitrile Rubber	OR5x2NBR	1					
27	Rubber plug	Nitrile Rubber	90036	1					
28	Screw ISO 1207 M5x14	Stainless Steel	1207051414	4					
	- Mylar Washer	Plastic <PA>	90048	4					
30****	Filter Cover, Oval I	Stainless Steel	90032	1					
29	- Screw ISO 1207 M4x8	Stainless Steel	1207040808	1					
31	- Aluminium Spacer	Aluminium	90091	1					
32	- Main Filter	Plastic <PP>	90033	1					
33	- O-ring Ø17,5x1,5 NBR70	Nitrile Rubber	OR17,5x1,5NBR	1					

*Cam with other ranges, front labels with other scale readings and spindles suitable for the most frequently used actuator types, are available.

** Certain valve/actuator packages may need additional field stability, which can be accomplished with the stability kit (100% to 300%- depending on orientation of the kit).

***Gauges available as an option. Also available in stainless steel.
..... 0-30 psi for I port
..... 0-160 psi for C+, C- and S port

****Filter Cover two version available Oval shaped I and Rhombic Shape II



V200 POSITIONER

www.vacaccessories.com

4. SPECIFICATIONS

4.1 Specifications V200

	Pneumatic V200P	Electropneumatic V200E	Electropneumatic Intrinsically Safe V200IS
Input Signal:	3-15 PSI	4-20mA (Max:Ri 250 Ohm)	4-20mA (Max:Ri 250 Ohm)
Supply Pressure:	<145 PSI (<1MPa)	21.8-145 PSI (0.15-1MPa)	21.8-145 PSI (0.15-1MPa)
Linearity error:	<0.7% f.s	<1.0% f.s	<1.0% f.s
Hysteresis:	<0.4% f.s	<0.6% f.s	<0.6% f.s
Repeatability:	<0.3% f.s	<0.5% f.s	<0.5% f.s
Temperature range:	-40° to +185 F -40° to +85°C	-40° to +185 F -40° to +85°C	-40° to +185 F * -40° to +85°C* *Temp.range depending on certification
Pressure gain: @87 PSI (600kPa)	300:1	300:1	300:1
Bleed Rate: @87PSI (600kPa)	SCFM (SLPM) 0.35 (9,9)	SCFM (SLPM) 0.40 (11,32)	SCFM (SLPM) 0.40 (11.32)
Air Delivery @87 PSI (600kPa)	SCFM (SLPM) 28.3 (800)	SCFM (SLPM) 28.3 (800)	SCFM (SLPM) 28.3 (800)
Air connections:	1/4" NPT (optional G threads)	1/4" NPT (optional G threads)	1/4" NPT (optional G threads)
Gauges:	1/8" NPT (optional G threads)	1/8" NPT (optional G threads)	1/8" NPT (optional G threads)
Cable entry:	1/2" NPT (optional M20x1.5)	1/2" NPT (optional M20x1.5)	1/2" NPT (optional M20x1.5)
Ingress & corrosion protection:	NEMA 4X and IP66	NEMA 4X and IP66	NEMA 4X and IP66
Standard coating:	Polyester	Polyester	Polyester
Weight:	3.2 lbs (1,45kg)	3.8 lbs (1.7kg)	3.8 lbs (1.7kg)
Weight with gauges:	3.4 lbs (1,54kg)	4.2 lbs (1.9kg)	4.2 lbs (1.9kg)

Valve types			Normal Gain	High Gain	Super High Gain
Pressure Gain:	@ 29 PSI (0.2MPa)	Poutput / Pinput	100	270	370
	@ 87 PSI (0.6MPa)	Poutput / Pinput	300	800	1100
	@ 145 PSI (1.0MPa)	Poutput / Pinput	500	1330	1830
Pressure Gain: Acc. to ISA S75.13	Any	%Poutput / %Pinput	20	52	72
Air Delivery:	@ 29 PSI (0.2MPa)	SCFM/(SLPM)	9.4 / (270)	10.6 / (300)	10.6 (300)
	@ 87 PSI (0.6MPa)	SCFM/(SLPM)	28.3 / (800)	31.8/ (900)	31.8 (900)
	@ 145 PSI (1.0MPa)	SCFM/(SLPM)	47.1 / (1330)	53.0 / (1500)	53.0 (1500)
Bleed Rate:	@ 29 PSI (0.2MPa)	SCFM/(SLPM)	0.12 / (3.4)	0.18 / (5.0)	0.24 (6.7)
	@ 87 PSI (0.6MPa)	SCFM/(SLPM)	0.35 / (10.0)	0.53/ (15.0)	0.71 (20.0)
	@ 145 PSI (1.0MPa)	SCFM/(SLPM)	0.59 / (16.7)	0.88 / (25.0)	1.18 (33.3)

Options: Feedback Spring for 6-30 PSI (40-200kPa) input signal.
Gauges. Stability kit, feedback modules

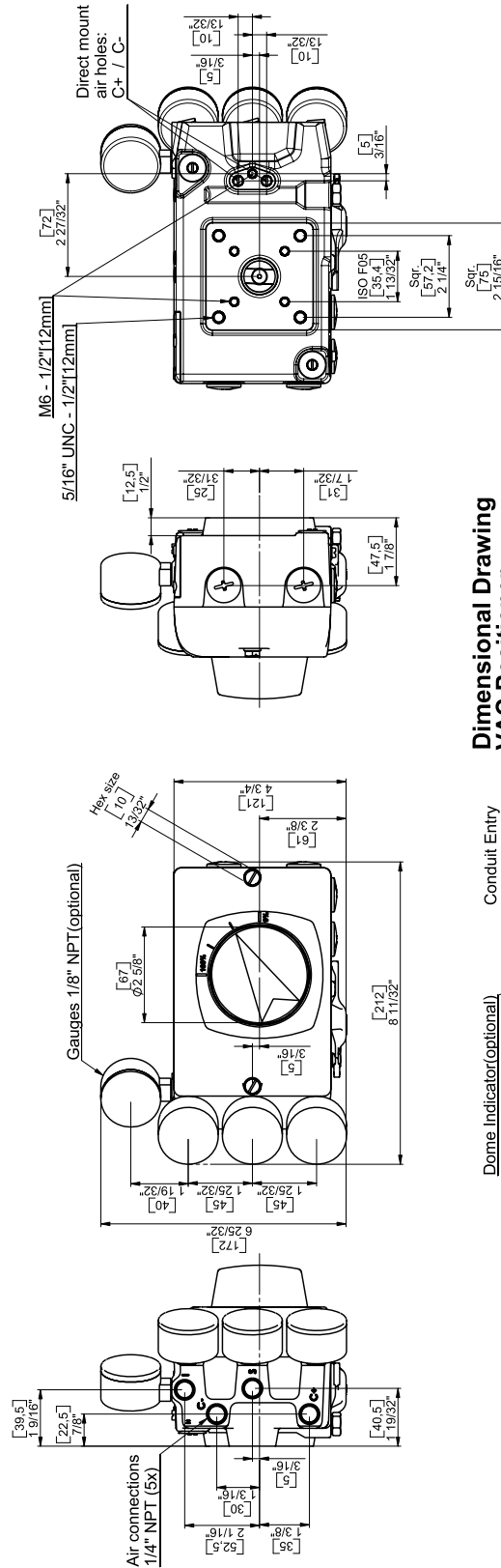
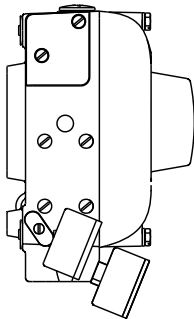


V200 POSITIONER

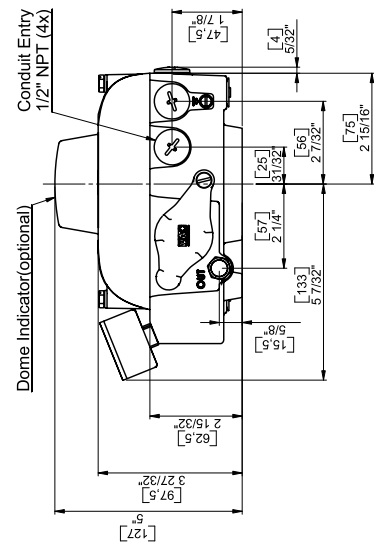
www.vacaccessories.com

5. DIMENSIONS

5.1 V200P/E std



Dimensional Drawing
VAC Positioner
V200 P/E std.





VALVE ACCESSORIES & CONTROLS

200 Jade Park
Chelsea, AL 35043
TEL: (11) 205-678 0507
FAX: (11) 205-678-0510
info@vacaccessories.com
www.vacaccessories.com

VALVE ACCESSORIES & CONTROLS

12942 Bedford Falls Drive
Cypress, TX 77429
TEL: (11) 713-493-2624
Cell: (11) 713-253-7781
FAX: (11) 281-256-9399
randye@vacaccessories.com

Limited Warranty

DeZURIK, Inc. ("Seller") manufactured products, auxiliaries and parts thereof that we manufacture for a period of twenty-four (24) months from date of shipment from Seller's factory, are warranted to the original purchaser only against defective workmanship and material, but only if properly stored, installed, operated, and serviced in accordance with Seller's recommendations and instructions.

For items proven to be defective within the warranty period, your exclusive remedy under this limited warranty is repair or replacement of the defective item, at Seller's option, FCA Incoterms 2020 Seller's facility with removal, transportation, and installation at your cost.

Products or parts manufactured by others but furnished by Seller are not covered by this limited warranty. Seller may provide repair or replacement for other's products or parts only to the extent provided in and honored by the original manufacturer's warranty to Seller, in each case subject to the limitations contained in the original manufacturer's warranty.

No claim for transportation, labor, or special or consequential damages or any other loss, cost or damage is being provided in this limited warranty. You shall be solely responsible for determining suitability for use and in no event shall Seller be liable in this respect.

This limited warranty does not warrant that any Seller product or part is resistant to corrosion, erosion, abrasion or other sources of failure, nor does Seller warrant a minimum length of service.

Your failure to give written notice to us of any alleged defect under this warranty within twenty (20) days of its discovery, or attempts by someone other than Seller or its authorized representatives to remedy the alleged defects therein, or failure to return product or parts for repair or replacement as herein provided, or failure to store, install, or operate said products and parts according to the recommendations and instructions furnished by Seller shall be a waiver by you of all rights under this limited warranty.

This limited warranty is voided by any misuse, modification, abuse or alteration of Seller's product or part, accident, fire, flood or other Act of God, or your failure to pay entire contract price when due.

The foregoing limited warranty shall be null and void if, after shipment from our factory, the item is modified in any way or a component of another manufacturer, such as but not limited to; an actuator is attached to the item by anyone other than a Seller factory authorized service personnel.

All orders accepted shall be deemed accepted subject to this limited warranty, which shall be exclusive of any other or previous warranty, and this shall be the only effective guarantee or warranty binding on Seller, despite anything to the contrary contained in the purchase order or represented by any agent or employee of Seller in writing or otherwise, notwithstanding, including but not limited to implied warranties.

THE FOREGOING REPAIR AND REPLACEMENT LIMITED WARRANTY IS IN LIEU OF ALL OTHER WARRANTIES, OBLIGATIONS AND LIABILITIES, INCLUDING, BUT NOT LIMITED TO, ALL WARRANTIES OF FITNESS FOR A PARTICULAR PURPOSE OR OF MERCHANTABILITY OR OTHERWISE, EXPRESSED OR IMPLIED IN FACT OR BY LAW, AND STATE SELLER'S ENTIRE AND EXCLUSIVE LIABILITY AND YOUR EXCLUSIVE REMEDY FOR ANY CLAIM IN CONNECTION WITH THE SALE AND FURNISHING OF SERVICES, GOODS OR PARTS, THEIR DESIGN, SUITABILITY FOR USE, INSTALLATION OR OPERATIONS. NEITHER ANY PERFORMANCE OR OTHER CONDUCT, NOR ANY ORAL OR WRITTEN INFORMATION, STATEMENT, OR ADVICE PREPARED BY SELLER OR ANY OF OUR EMPLOYEES OR AGENTS WILL CREATE A WARRANTY, OR IN ANY WAY INCREASE THE SCOPE OR DURATION OF THE LIMITED WARRANTY.

Disclaimer

Metric fasteners should not be used with ASME Class 150/300 bolt holes and flange bolt patterns. If you use metric fasteners with ASME Class 150/300 bolt holes and flange bolt patterns, it may lead to product failure, injury, and loss of life. DeZURIK Inc. disclaims all liability associated with the use of metric fasteners with ASME Class 150/300 bolt holes and flange patterns, including but not limited to personal injury, loss of life, loss of product, production time, equipment, property damage, lost profits, consequential damages of any kind and environment damage and/or cleanup. Use of metric fasteners with ASME Class 150/300 bolt holes and flange bolt patterns is a misuse that voids all warranties and contractual assurances. If you use metric fasteners with ASME Class 150/300 bolt holes and flange bolt patterns, you do so at your sole risk and any liability associated with such use shall not be the responsibility of DeZURIK, Inc. In addition to the foregoing, DeZURIK's Manufacturer's Conditions apply.

Limitation of Liability

IN NO EVENT SHALL SELLER BE LIABLE FOR ANY DIRECT, INDIRECT, SPECIAL, PUNITIVE, EXEMPLARY, OR CONSEQUENTIAL DAMAGES (INCLUDING, BUT NOT LIMITED TO; DAMAGE TO OR LOSS OF OTHER PROPERTY OR EQUIPMENT, BUSINESS INTERRUPTION, COST OF SUBSTITUTE PRODUCTS, LOSS OF TIME, LOSS OF PROFITS OR REVENUE, COST OF CAPITAL, LOSS OF USE, OR DIMINUTION IN VALUE) WHATSOEVER, AND SELLER'S LIABILITY, UNDER NO CIRCUMSTANCES, WILL EXCEED THE CONTRACT PRICE FOR THE GOODS AND/OR SERVICES FOR WHICH LIABILITY IS CLAIMED. ANY ACTION FOR BREACH OF CONTRACT BY YOU, OTHER THAN RIGHTS RESPECTING OUR LIMITED WARRANTY DESCRIBED ABOVE, MUST BE COMMENCED WITHIN 12 MONTHS AFTER THE DATE OF SALE.

Sales and Service

For information about our worldwide locations, approvals, certifications and local representative:

Web site: www.dezurik.com E-Mail: info@dezurik.com



250 Riverside Ave. N., Sartell, MN 56377 • Phone: 320-259-2000 • Fax: 320-259-2227

DeZURIK, Inc. reserves the right to incorporate our latest design and material changes without notice or obligation.

Design features, materials of construction and dimensional data, as described in this manual, are provided for your information only and should not be relied upon unless confirmed in writing by DeZURIK, Inc. Certified drawings are available upon request.