

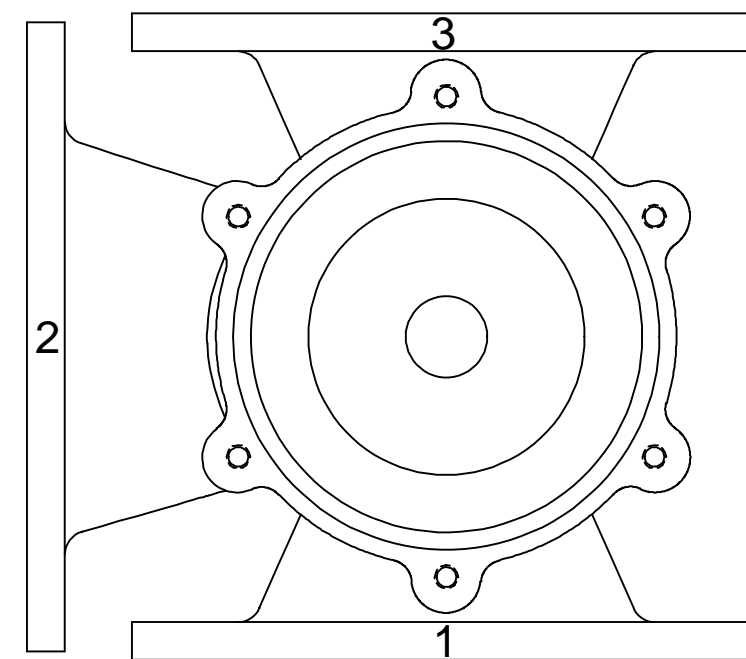
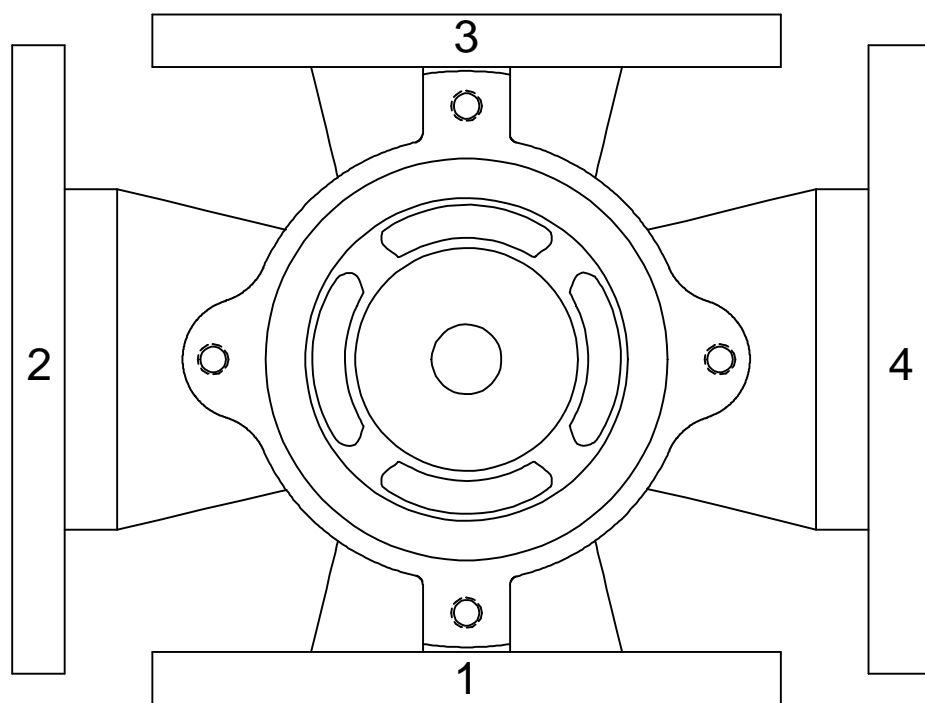
GROUP 1 AND 4 VALVES (AL, CI, CIH) BODY MATERIAL (F110) DIN 10 DRILLING								
VALVE SIZE		DIMENSIONS IN [MM]						
IN	MM	A	B	C	D	E	F	G
2	50							
3	80	6.30 [160]	M16 X 2	4	.56 [14]	.71 [18]	4	8
4	100	7.09 [180]	M16 X 2	4	.75 [19]	.71 [18]	4	8
5	125	8.27 [210]	M16 X 2	8	.75 [19]			
6	150	9.45 [240]	M20 X 2.5	4	.75 [19]	.91 [23]	4	8
8	200	11.61 [295]	M20 X 2.5	4	.81 [21]	.91 [23]	4	8
10	250	13.78 [350]	M20 X 2.5	8	.88 [22]	.91 [23]	4	12
12	300	15.75 [400]	M20 X 2.5	12	.88 [22]	.91 [23]		12
14 **	350 **	18.11 [460]	M20 X 2.5	16 **	1.00 [25]			
16 **	400 **	20.28 [515]	M24 X 3	16 **	1.12 [28]			

** FLANGE # 2 AND # 4 HAVE A QUANTITY OF 16 TAPPED HOLES.

GROUP 2 AND 3 VALVES (CS, S2) BODY MATERIAL (F110) DIN 10 DRILLING								
VALVE SIZE		DIMENSIONS IN [MM]						
IN	MM	A	B	C	D	E	F	G
2	50							
3	80	6.30 [160]	M16 X 2	4	.56 [14]	.71 [18]	4	8
4	100	7.09 [180]				.71 [18]	8	8
5	125	8.27 [210]	M16 X 2	8	.75 [19]			
6 *	150 *	9.45 [240]	M20 X 2.5	4 *	.75 [19]	.91 [23]	4	4
8	200	11.61 [295]	M20 X 2.5	4	.81 [21]	.91 [23]	4	8
10	250	13.78 [350]	M20 X 2.5	8	.88 [22]	.91 [23]	4	12
12	300	15.75 [400]	M20 X 2.5	12	.88 [22]	.91 [23]		12
14 **	350 **	18.11 [460]	M20 X 2.5	16 **	1.00 [25]			
16 **	400 **	20.28 [515]	M24 X 3	16 **	1.12 [28]			

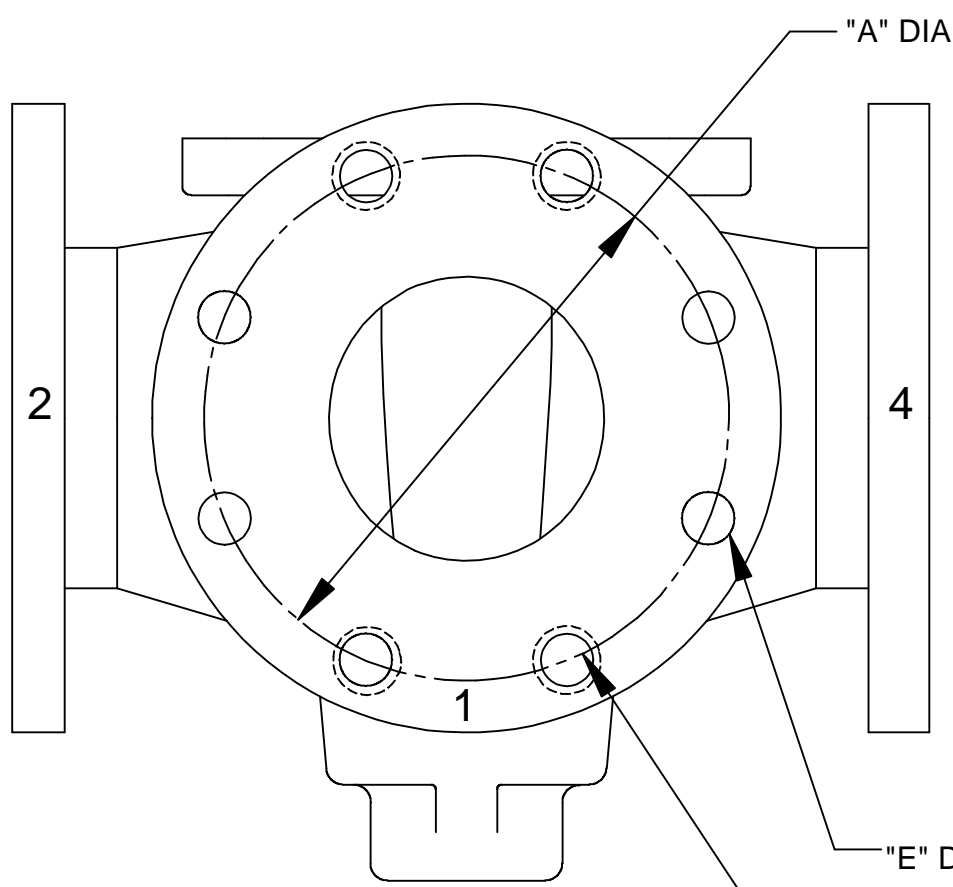
* FLANGE # 2 AND # 4 HAVE A QUANTITY OF 4 TAPPED HOLES AND 4 THRU HOLES.

** FLANGE # 2 AND # 4 HAVE A QUANTITY OF 16 TAPPED HOLES.

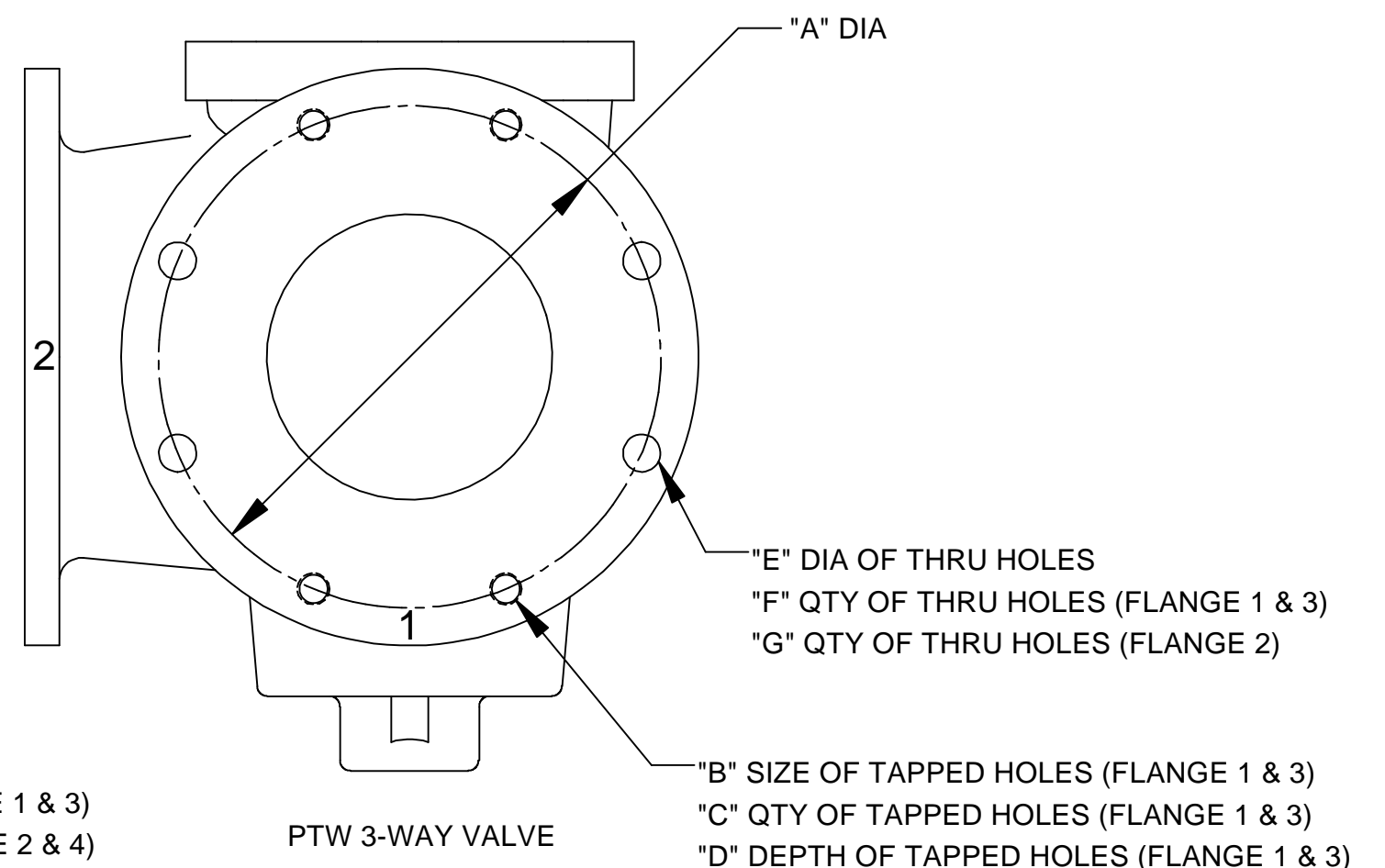


NOTE:

1. ALL QUANTITIES ARE PER FLANGE.



PFW 4-WAY VALVE



PTW 3-WAY VALVE

G	F	E	D	C	B	A
					62195	6/1/12
						7/26/77

DeZURIK
Sartell, MN USA 56377
www.dezurik.com

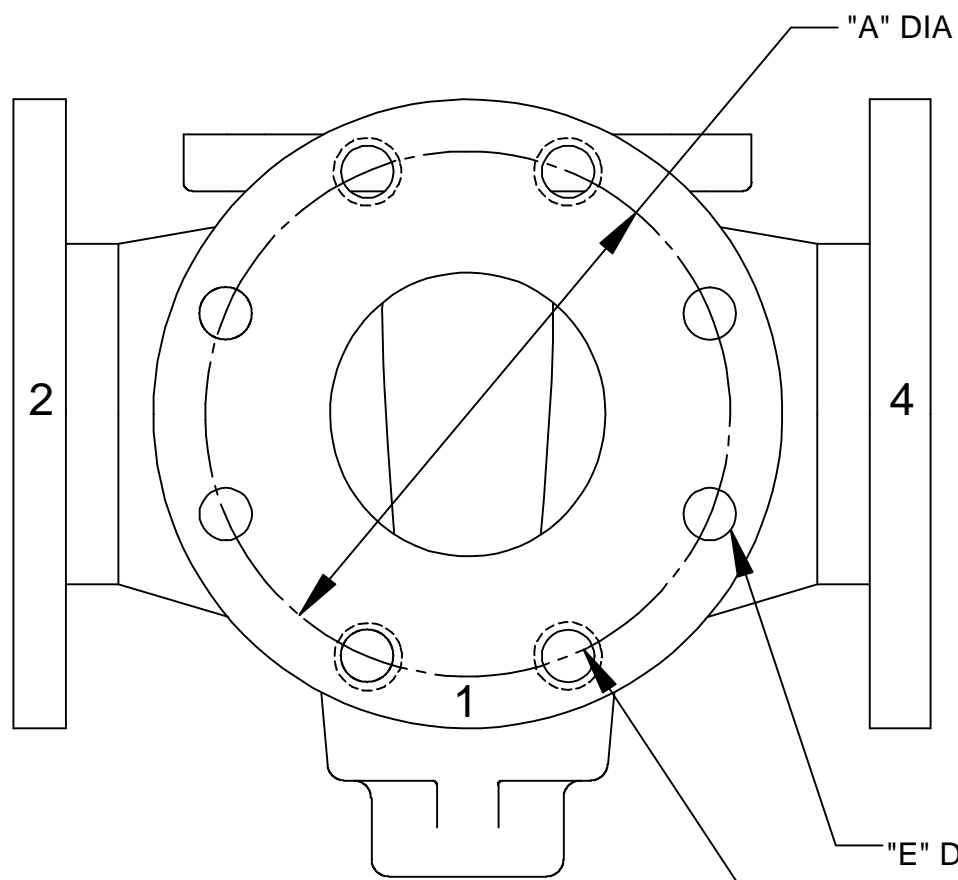
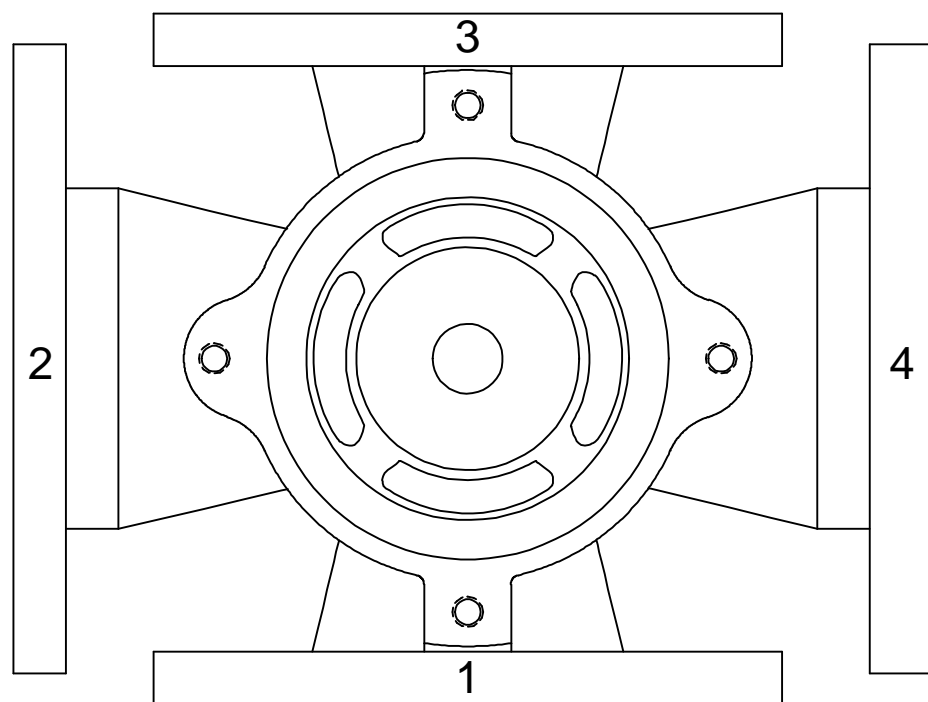
PFW AND PTW TAPERED PLUG VALVES SIZE 2 - 16 FLANGED
DIN 10 DRILLING

DOCT. CODE	DRAWN	TC	APPROVED	TPK
C1	CHECKED	TPK	DATE	6/1/12

A16374

GROUP 1 AND 4 VALVES (AL, CI, CIH) BODY MATERIAL (F116) DIN 16 DRILLING								
VALVE SIZE		DIMENSIONS IN [MM]						
IN	MM	A	B	C	D	E	F	G
2	50							
3	80	6.30 [160]	M16 X 2	4	.56 [14]	.71 [18]	4	8
4	100	7.09 [180]	M16 X 2	4	.75 [19]	.71 [18]	4	8
5	125	8.27 [210]	M16 X 2	8	.75 [19]			
6	150	9.45 [240]	M20 X 2.5	4	.75 [19]	.91 [23]	4	8
8	200	11.61 [295]	M20 X 2.5	4	.81 [21]	.91 [23]	8	12
10	250	13.98 [355]	M24 X 3	8	.88 [22]	1.06 [27]	4	12
12	300	16.14 [410]	M24 X 3	8	.88 [22]	1.06 [27]	4	12
14	350	18.50 [470]				1.06 [27]	16	16
16 **	400 **	20.67 [525]	M27 X 3	16 **	1.06 [27]			

** FLANGE # 2 AND # 4 HAVE A QUANTITY OF 16 TAPPED HOLES.



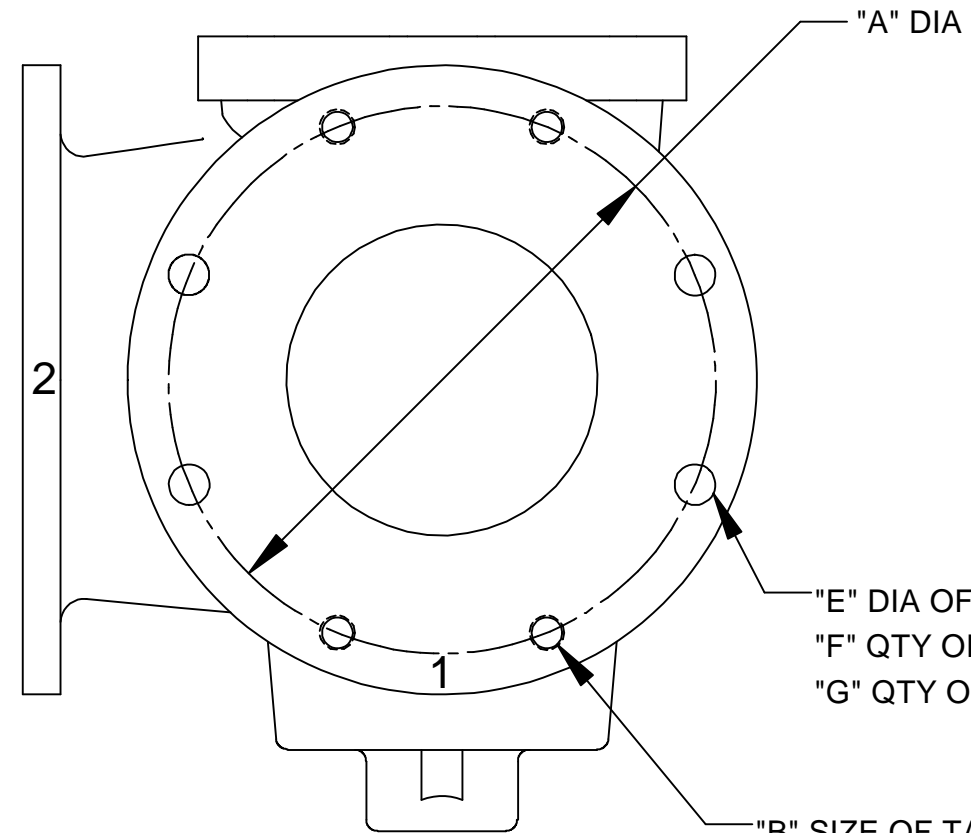
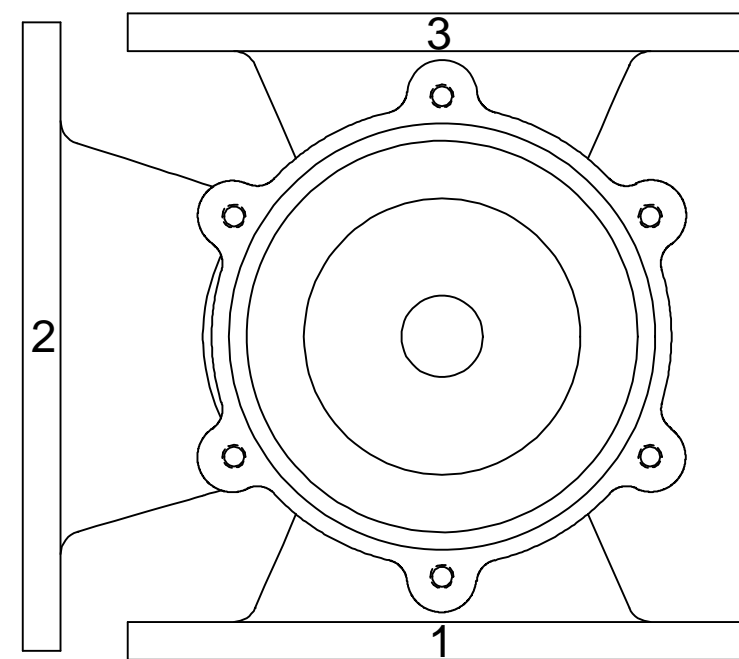
PFW 4-WAY VALVE

"E" DIA OF THRU HOLES
 "F" QTY OF THRU HOLES (FLANGE 1 & 3)
 "G" QTY OF THRU HOLES (FLANGE 2 & 4)
 "B" SIZE OF TAPPED HOLES (FLANGE 1 & 3)
 "C" QTY OF TAPPED HOLES (FLANGE 1 & 3)
 "D" DEPTH OF TAPPED HOLES (FLANGE 1 & 3)

GROUP 2 AND 3 VALVES (CS, S2) BODY MATERIAL (F116) DIN 16 DRILLING								
VALVE SIZE		DIMENSIONS IN [MM]						
IN	MM	A	B	C	D	E	F	G
2	50							
3	80	6.30 [160]	M16 X 2	4	.56 [14]	.71 [18]	4	8
4	100	7.09 [180]				.71 [18]	8	8
5	125	8.27 [210]	M16 X 2	8	.75 [19]			
6 *	150 *	9.45 [240]	M20 X 2.5	4 *	.75 [19]	.91 [23]	4	4
8	200	11.61 [295]	M20 X 2.5	4	.81 [21]	.91 [23]	8	12
10	250	13.98 [355]	M24 X 3	8	.88 [22]	1.06 [27]	4	12
12	300	16.14 [410]	M24 X 3	8	.88 [22]	1.06 [27]	4	12
14	350	18.50 [470]				1.06 [27]	16	16
16 **	400 **	20.67 [525]	M27 X 3	16 **	1.06 [27]			

* FLANGE # 2 AND # 4 HAVE A QUANTITY OF 4 TAPPED HOLES AND 4 THRU HOLES.

** FLANGE # 2 AND # 4 HAVE A QUANTITY OF 16 TAPPED HOLES.



PTW 3-WAY VALVE

NOTE:

1. ALL QUANTITIES ARE PER FLANGE.

G	F	E	D	C	B	A
					62195	6/1/12
						7/26/77

DeZURIK
 Sartell, MN USA 56377
 www.dezurik.com

PFW AND PTW TAPERED PLUG VALVES SIZE 2 - 16 FLANGED DIN 16 DRILLING			
DOCT. CODE	DRAWN	TC	APPROVED
C1	CHECKED	TPK	DATE
			6/1/12

A16374

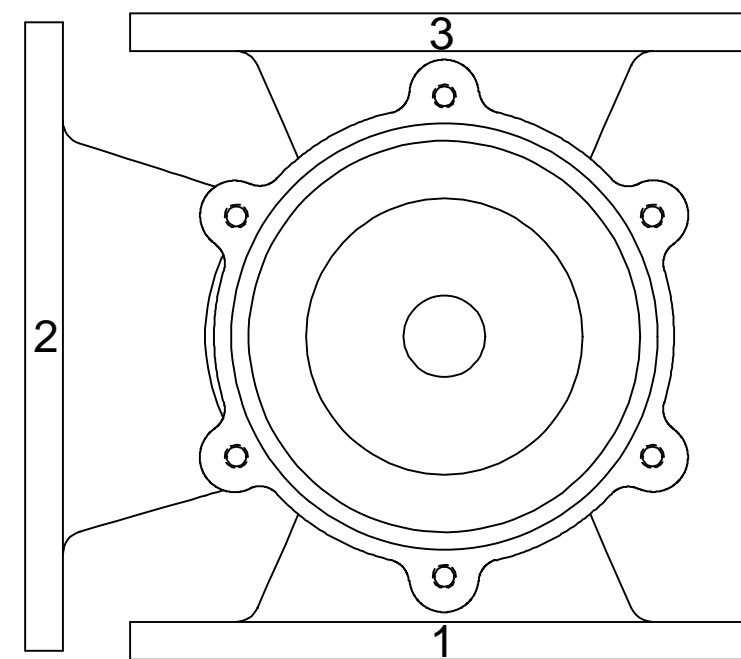
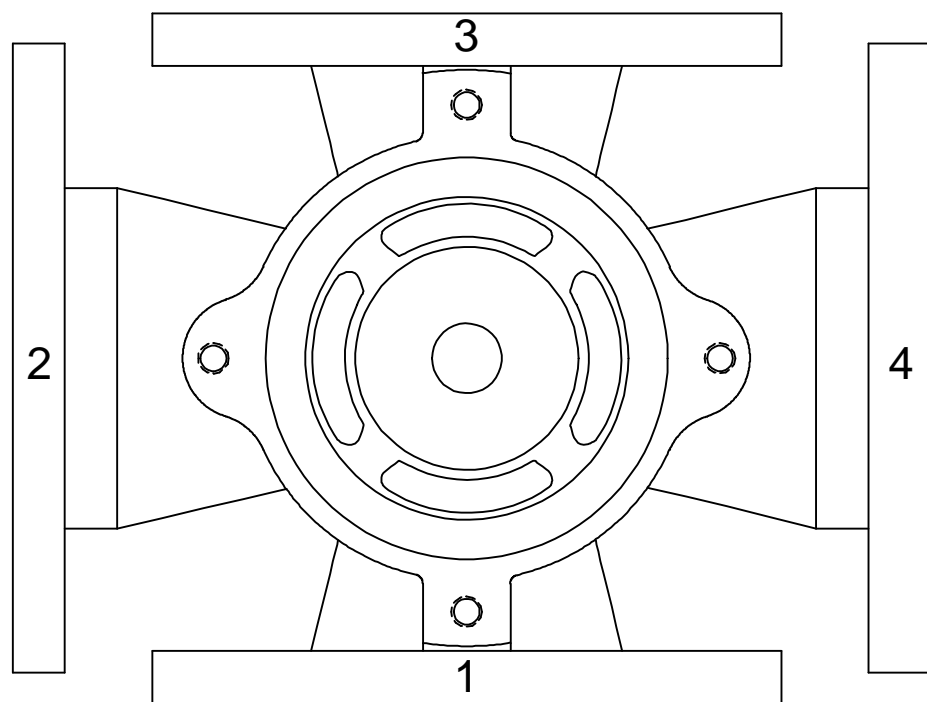
GROUP 1 AND 4 VALVES (AL, CI, CIH) BODY MATERIAL (F1D) B.S. TABLE D DRILLING								
VALVE SIZE		DIMENSIONS IN [MM]						
IN	MM	A	B	C	D	E	F	G
2	50							
3	80	5.75 [146]				0.69 [18]	4	4
4	100	7.00 [178]				.69 [18]	4	4
5	125	8.27 [210]	5/8-11 NC	8	.75 [19]			
6	150	9.25 [235]	5/8-11 NC	4	.75 [19]	.69 [18]	4	8
8	200	11.50 [292]	5/8-11 NC	4	.81 [21]	.69 [18]	4	8
10	250	14.00 [356]	3/4-10 NC	4	.88 [22]	.88 [22]	4	8
12	300	16.00 [406]	3/4-10 NC	8	.88 [22]	.88 [22]	4	12
14	350	18.50 [470]				1.00 [25]	12	12
16 **	400 **	20.50 [521]	7/8-9 NC	12 **	1.12 [28]			

** FLANGE # 2 AND # 4 HAVE A QUANTITY OF 12 TAPPED HOLES.

GROUP 2 AND 3 VALVES (CS, S2) BODY MATERIAL (F1D) B.S. TABLE D DRILLING								
VALVE SIZE		DIMENSIONS IN [MM]						
IN	MM	A	B	C	D	E	F	G
2	50							
3	80	5.75 [146]				.69 [18]	4	4
4	100	7.00 [178]				.69 [18]	4	4
5	125	8.27 [210]	5/8-11 NC	8	.75 [19]			
6 *	150 *	9.25 [235]	5/8-11 NC	4 *	.75 [19]	.69 [18]	4	4
8	200	11.50 [292]	5/8-11 NC	4	.81 [21]	.69 [18]	4	8
10	250	14.00 [356]	3/4-10 NC	4	.88 [22]	.88 [22]	4	8
12	300	16.00 [406]	3/4-10 NC	8	.88 [22]	.88 [22]	4	12
14	350	18.50 [470]				1.00 [25]	12	12
16 **	400 **	20.50 [521]	7/8-9 NC	12 **	1.12 [28]			

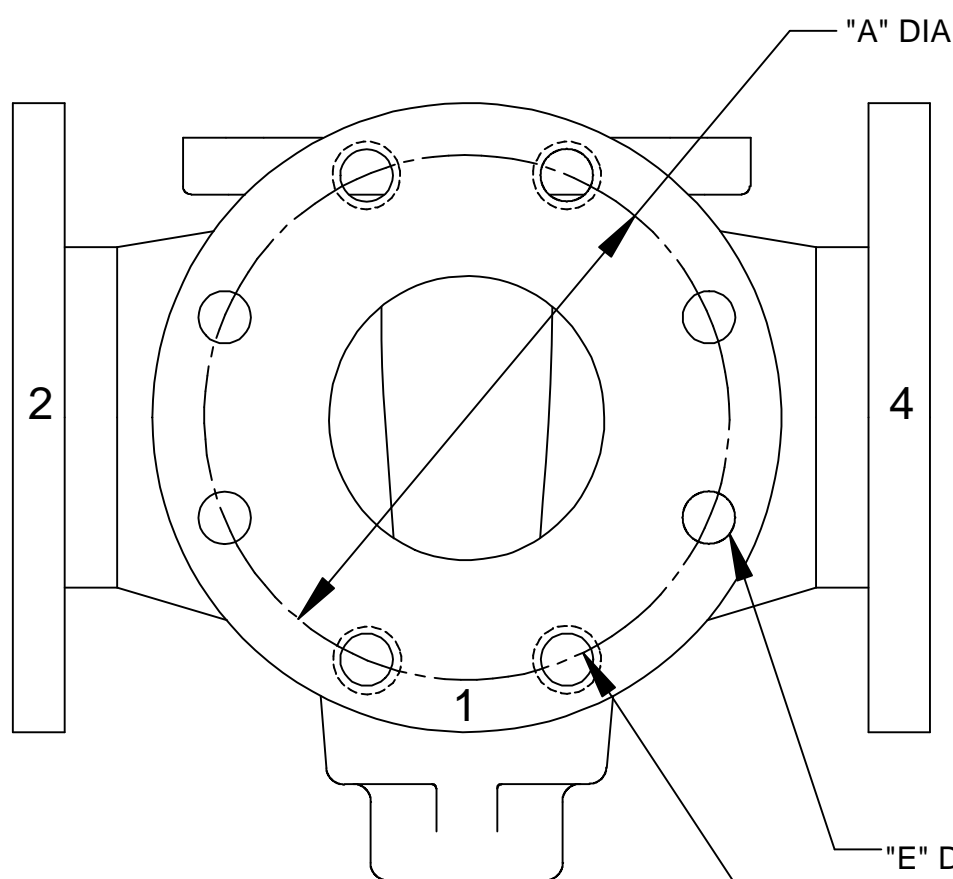
* FLANGE # 2 AND # 4 HAVE A QUANTITY OF 4 TAPPED HOLES AND 4 THRU HOLES.

** FLANGE # 2 AND # 4 HAVE A QUANTITY OF 12 TAPPED HOLES.



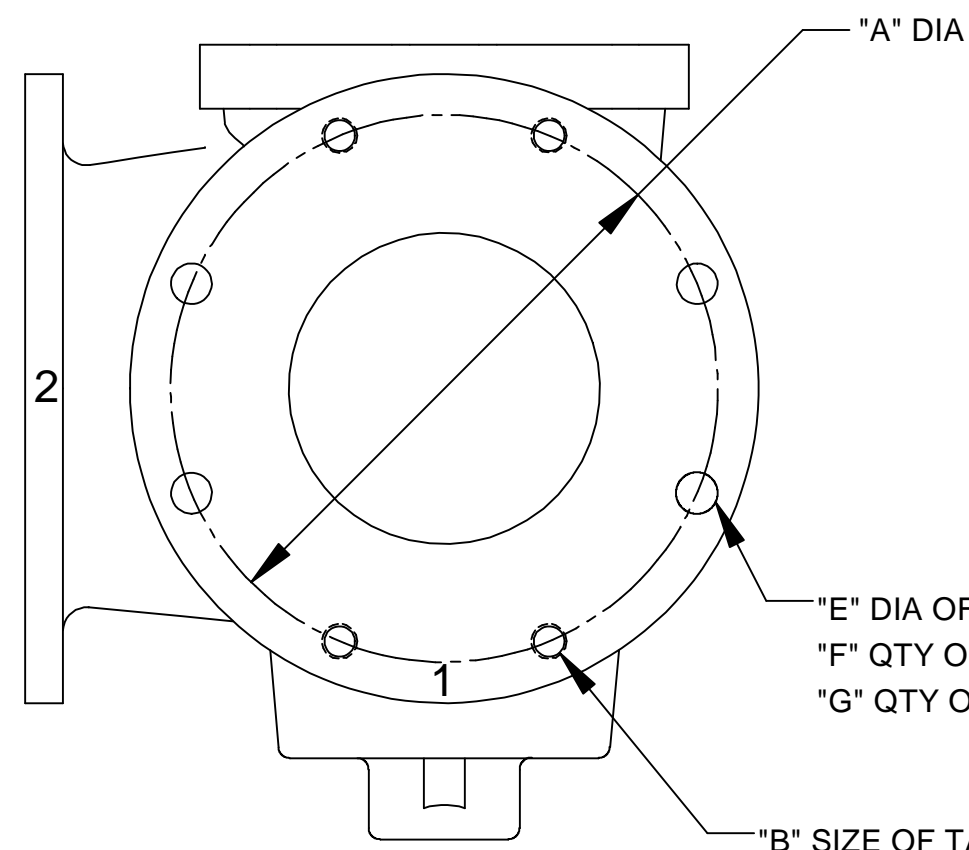
NOTE:

1. ALL QUANTITIES ARE PER FLANGE.



PFW 4-WAY VALVE

"E" DIA OF THRU HOLES
 "F" QTY OF THRU HOLES (FLANGE 1 & 3)
 "G" QTY OF THRU HOLES (FLANGE 2 & 4)
 "B" SIZE OF TAPPED HOLES (FLANGE 1 & 3)
 "C" QTY OF TAPPED HOLES (FLANGE 1 & 3)
 "D" DEPTH OF TAPPED HOLES (FLANGE 1 & 3)



PTW 3-WAY VALVE

"B" SIZE OF TAPPED HOLES (FLANGE 1 & 3)
 "C" QTY OF TAPPED HOLES (FLANGE 1 & 3)
 "D" DEPTH OF TAPPED HOLES (FLANGE 1 & 3)

G	F	E	D	C	B	A
					62195	6/1/12
						7/26/77

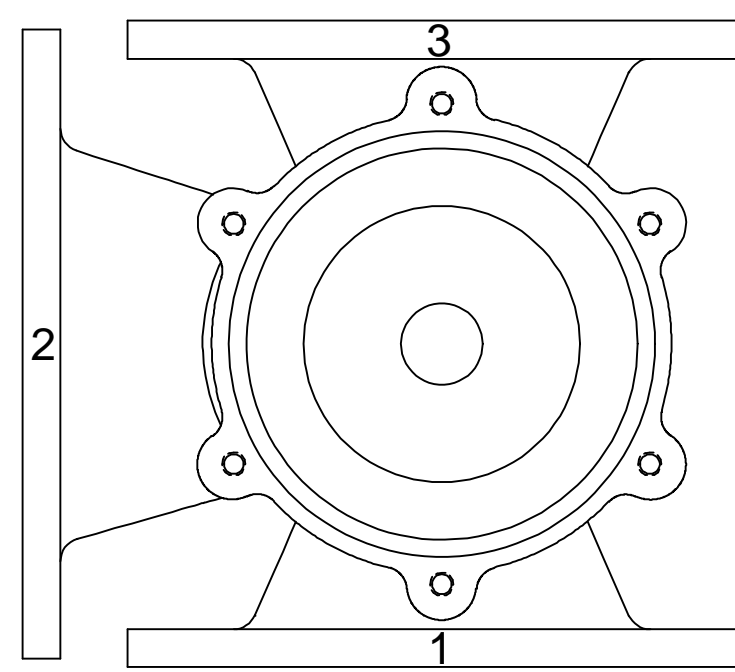
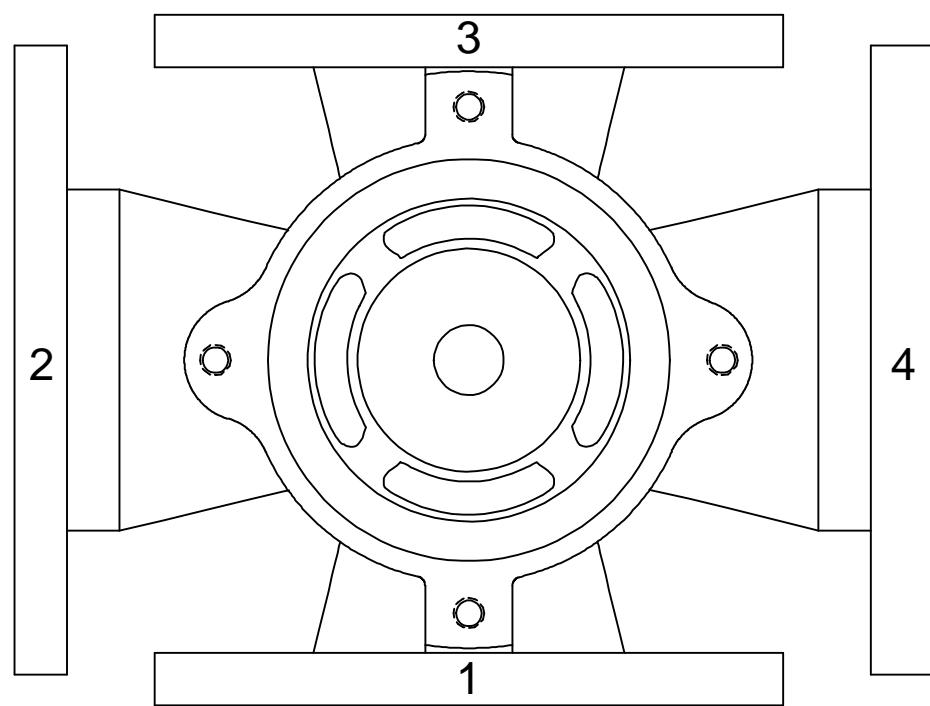
DeZURIK
 Sartell, MN USA 56377
 www.dezurik.com

PFW AND PTW TAPERED PLUG VALVES SIZE 2 - 16 FLANGED B.S. TABLE D DRILLING			
DOCT. CODE	DRAWN	TC	APPROVED
C1	CHECKED	TPK	TPK
		DATE	6/1/12
			A16374

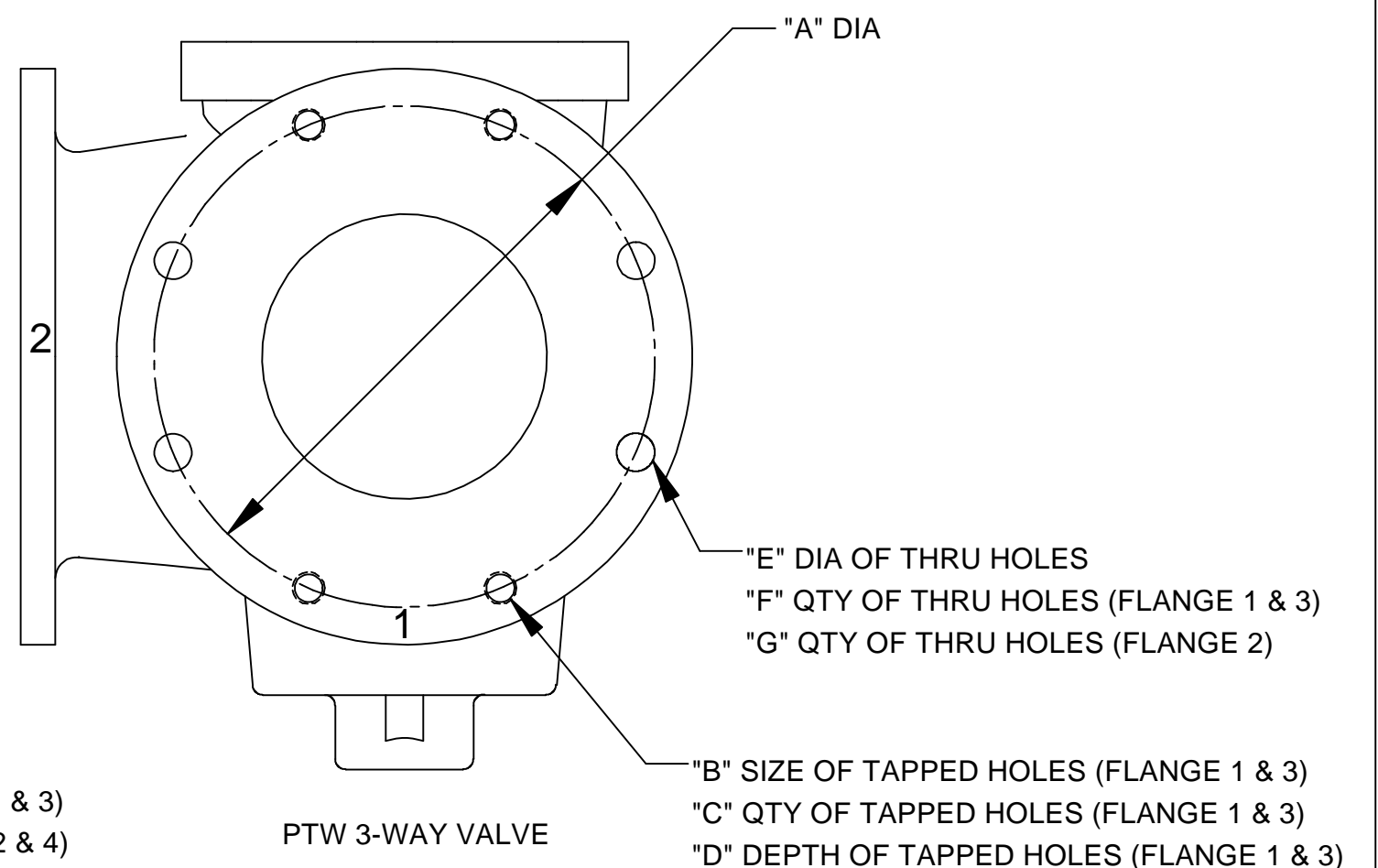
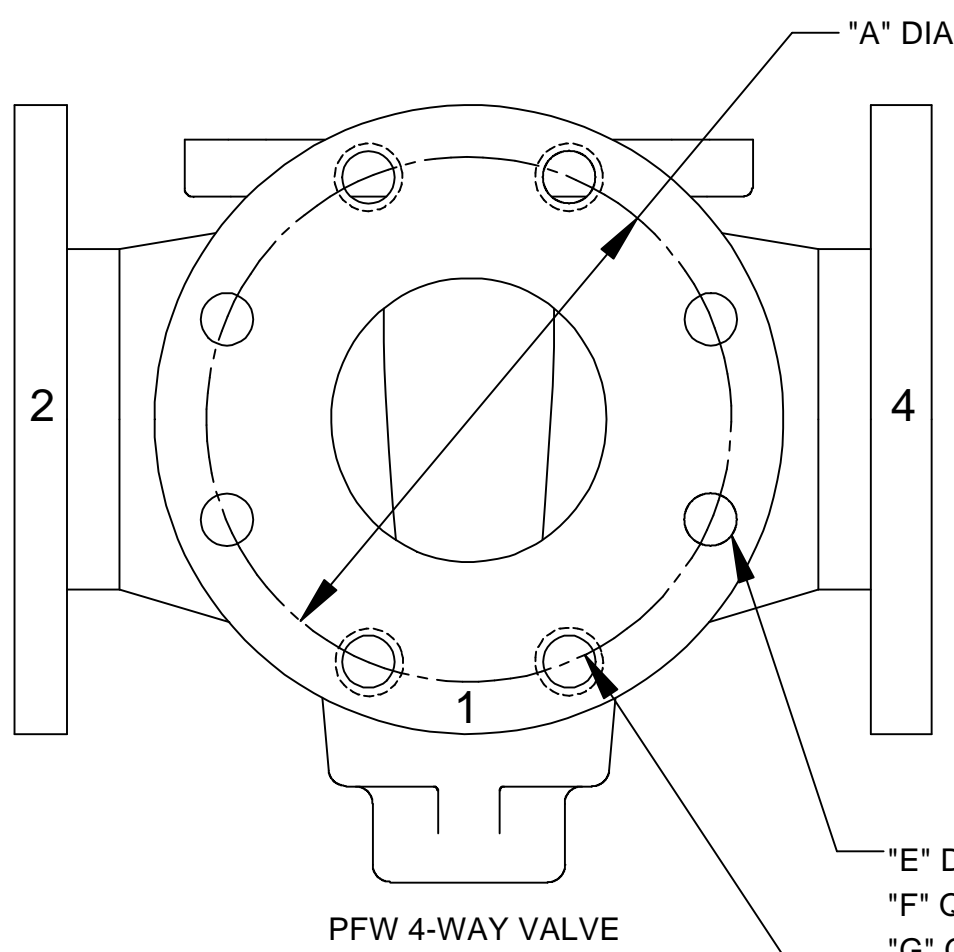
GROUP 1 AND 4 VALVES (AL, CI, CIH) BODY MATERIAL (F1E) B.S. TABLE E DRILLING								
VALVE SIZE		DIMENSIONS IN [MM]						
IN	MM	A	B	C	D	E	F	G
2	50							
3	80	5.75 [146]				0.69 [18]	4	4
4	100	7.00 [178]	5/8-11 NC	4	.75 [19]	.69 [18]	4	8
5	125	8.27 [210]	5/8-11 NC	8	.75 [19]			
6	150	9.25 [235]	3/4-10 NC	4	.75 [19]	.88 [22]	4	8
8	200	11.50 [292]	3/4-10 NC	4	.81 [21]	.88 [22]	4	8
10	250	14.00 [356]	3/4-10 NC	8	.88 [22]	.88 [22]	4	12
12	300	16.00 [406]	7/8-9 NC	8	.88 [22]	1.00 [25]	4	12
14	350							
16	400							

GROUP 2 AND 3 VALVES (CS, S2) BODY MATERIAL (F1E) B.S. TABLE E DRILLING								
VALVE SIZE		DIMENSIONS IN [MM]						
IN	MM	A	B	C	D	E	F	G
2	50							
3	80	5.75 [146]				.69 [18]	4	4
4	100	7.00 [178]				.69 [18]	8	8
5	125	8.27 [210]	5/8-11 NC	8	.75 [19]			
6*	150*	9.25 [235]	3/4-10 NC	4*	.75 [19]	.88 [22]	4	4
8	200	11.50 [292]	3/4-10 NC	4	.81 [21]	.88 [22]	4	8
10	250	14.00 [356]	3/4-10 NC	8	.88 [22]	.88 [22]	4	12
12	300	16.00 [406]	7/8-9 NC	8	.88 [22]	1.00 [25]	4	12
14	350							
16	400							

* FLANGE # 2 AND # 4 HAVE A QUANTITY OF 4 TAPPED HOLES AND 4 THRU HOLES.



NOTE:
1. ALL QUANTITIES ARE PER FLANGE.



PFW 4-WAY VALVE

PTW 3-WAY VALVE

"A" DIA
"E" DIA OF THRU HOLES
"F" QTY OF THRU HOLES (FLANGE 1 & 3)
"G" QTY OF THRU HOLES (FLANGE 2 & 4)
"B" SIZE OF TAPPED HOLES (FLANGE 1 & 3)
"C" QTY OF TAPPED HOLES (FLANGE 1 & 3)
"D" DEPTH OF TAPPED HOLES (FLANGE 1 & 3)

G	F	E	D	C	B	A
					62195	6/1/12
						7/26/77

DeZURIK
Sartell, MN USA 56377
www.dezurik.com

PFW AND PTW TAPERED PLUG VALVES SIZE 2 - 16 FLANGED
B.S. TABLE E DRILLING

DOCT. CODE	DRAWN	TC	APPROVED	TPK
C1	CHECKED	TPK	DATE	6/1/12

A16374

GROUP 1 AND 4 VALVES (AL, CI, CIH) BODY MATERIAL (F1J1) JIS 10 DRILLING								
VALVE SIZE		DIMENSIONS IN [MM]						
IN	MM	A	B	C	D	E	F	G
2	50							
3	80	5.91 [150]	M16 X 2	4	0.56 [14]	.75 [19]	4	8
4	100	6.89 [175]	M16 X 2	4	.75 [19]	.75 [19]	4	8
5	125	8.27 [210]	M20 X 2.5	8	.75 [19]			
6	150	9.45 [240]	M20 X 2.5	4	.75 [19]	.94 [24]	4	8
8	200	11.42 [290]	M20 X 2.5	12	.81 [21]	.91 [23]		12
10	250	13.98 [355]	M22 X 2.5	8	.88 [22]	1.00 [25]	4	12
12	300	15.75 [400]	M22 X 2.5	16	.88 [22]	1.00 [25]		16
14 **	350 **	17.52 [445]	M22 X 2.5	16 **	1.00 [25]			
16 **	400 **	20.08 [510]	M24 X 3	16 **	1.12 [28]			

** FLANGE # 2 AND # 4 HAVE A QUANTITY OF 16 TAPPED HOLES.

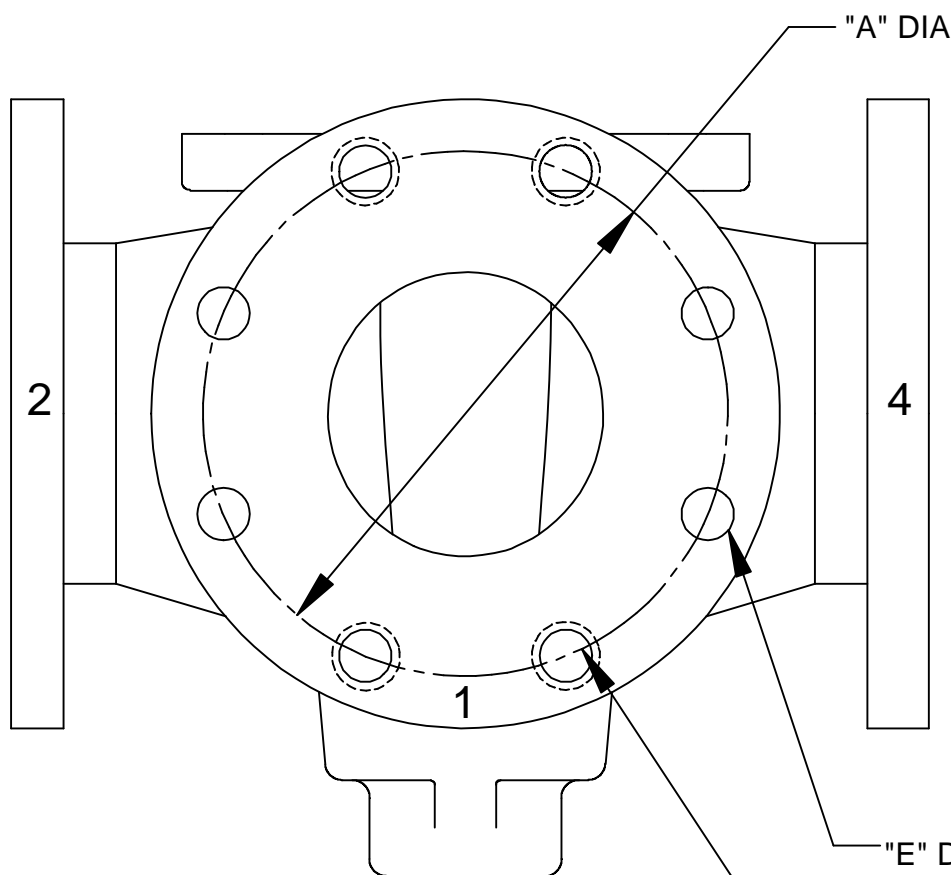
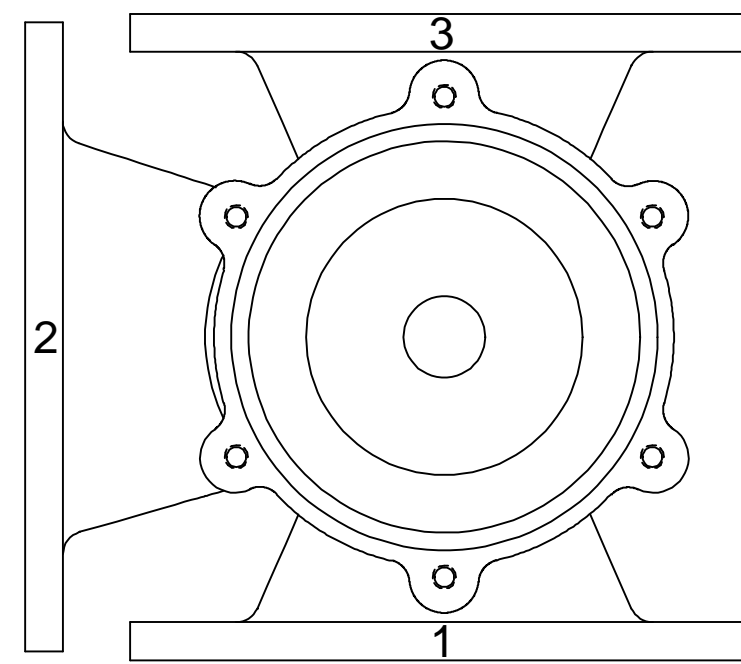
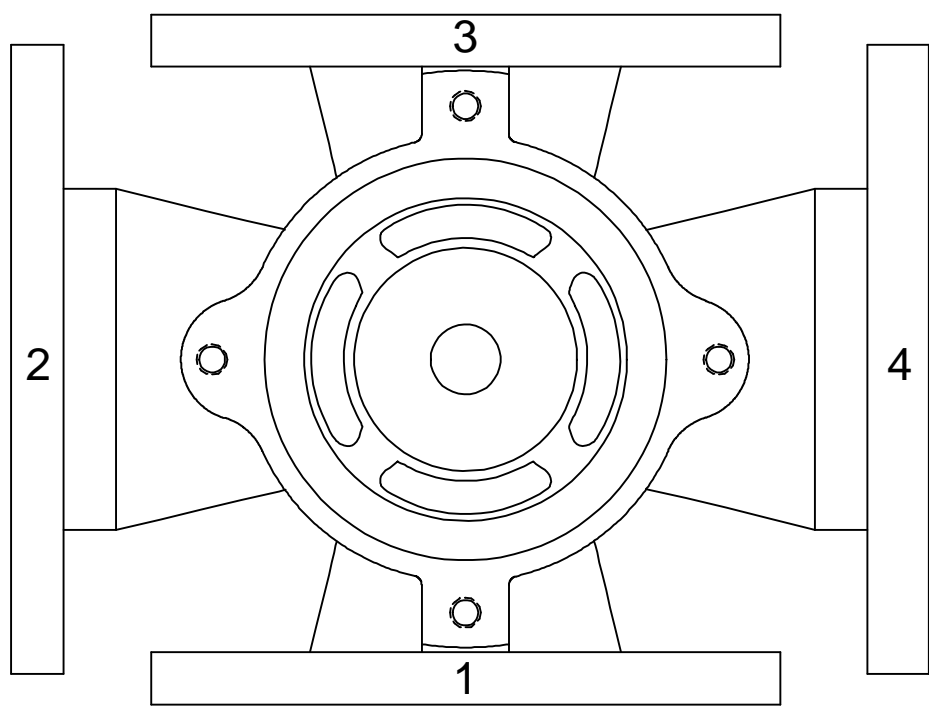
GROUP 2 AND 3 VALVES (CS, S2) BODY MATERIAL (F1J1) JIS 10 DRILLING								
VALVE SIZE		DIMENSIONS IN [MM]						
IN	MM	A	B	C	D	E	F	G
2	50							
3	80	5.91 [150]	M16 X 2	4	0.56 [14]	.75 [19]	4	8
4	100	6.89 [175]	M16 X 2	4	.75 [19]	.75 [19]	4	8
5	125	8.27 [210]	M20 X 2.5	8	.75 [19]			
6 *	150 *	9.45 [240]	M20 X 2.5	4 *	.75 [19]	.94 [24]	4	4
8	200	11.42 [290]	M20 X 2.5	12	.81 [21]	.91 [23]		12
10	250	13.98 [355]	M22 X 2.5	8	.88 [22]	1.00 [25]	4	12
12	300	15.75 [400]	M22 X 2.5	16	.88 [22]	1.00 [25]		16
14	350	17.52 [445]	M22 X 2.5	16	1.00 [25]			
16 **	400 **	20.08 [510]	M24 X 3	16 **	1.12 [28]			

* FLANGE # 2 AND # 4 HAVE A QUANTITY OF 4 TAPPED HOLES AND 4 THRU HOLES.

** FLANGE # 2 AND # 4 HAVE A QUANTITY OF 16 TAPPED HOLES.

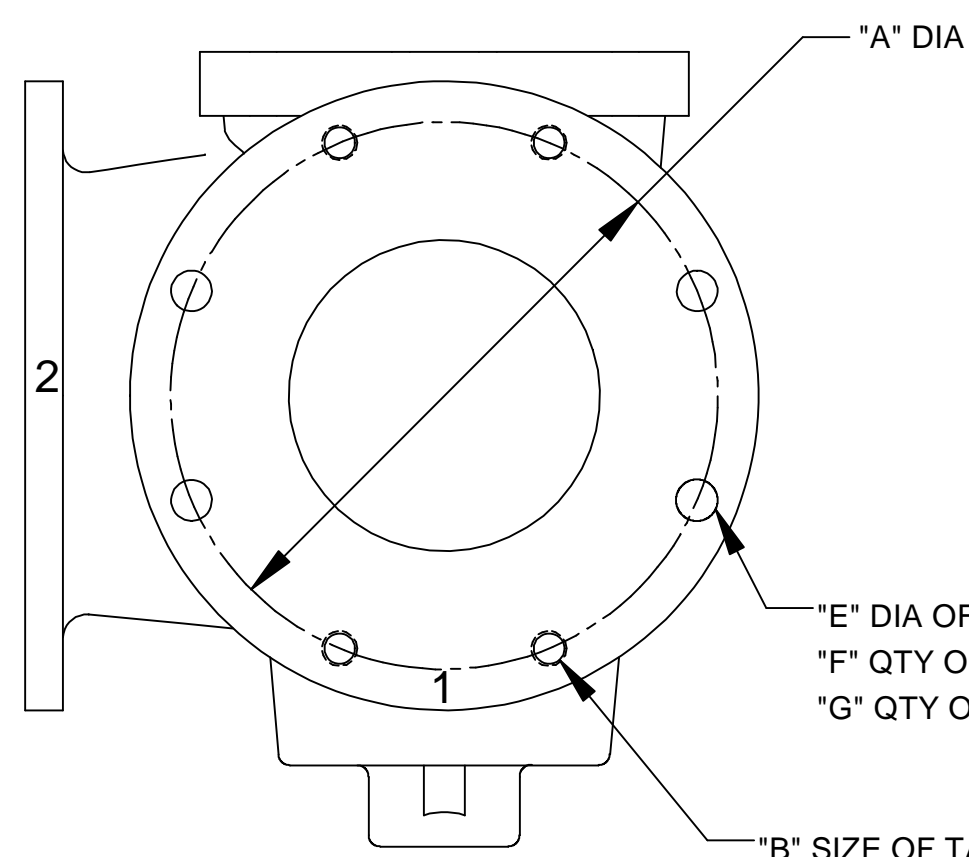
NOTE:

1. ALL QUANTITIES ARE PER FLANGE.



PFW 4-WAY VALVE

"E" DIA OF THRU HOLES
"F" QTY OF THRU HOLES (FLANGE 1 & 3)
"G" QTY OF THRU HOLES (FLANGE 2 & 4)
"B" SIZE OF TAPPED HOLES (FLANGE 1 & 3)
"C" QTY OF TAPPED HOLES (FLANGE 1 & 3)
"D" DEPTH OF TAPPED HOLES (FLANGE 1 & 3)



PTW 3-WAY VALVE

"E" DIA OF THRU HOLES
"F" QTY OF THRU HOLES (FLANGE 1 & 3)
"G" QTY OF THRU HOLES (FLANGE 2)
"B" SIZE OF TAPPED HOLES (FLANGE 1 & 3)
"C" QTY OF TAPPED HOLES (FLANGE 1 & 3)
"D" DEPTH OF TAPPED HOLES (FLANGE 1 & 3)

G	F	E	D	C	B	A
					62195	6/1/12
						7/26/77

DeZURIK
Sartell, MN USA 56377
www.dezurik.com

PFW AND PTW TAPERED PLUG VALVES SIZE 2 - 16 FLANGED
JIS 10 DRILLING

DOCT. CODE	DRAWN	TC	APPROVED	TPK
C1	CHECKED	TPK	DATE	6/1/12

A16374