

DeZURIK KCI COAL BURNER ISOLATION VALVES



Design & Construction

The DeZURIK Coal Burner Isolation Valve is a knife gate valve specifically designed to isolate pulverized coal burner lines on coal fired boilers during periodic maintenance shutdowns. To handle the severe, abrasive nature of pulverized coal, the DeZURIK Coal Burner Isolation Valve features either an integral or a removable and rotatable hard-faced seat ring to facilitate maintenance and assure continuous operation.

The valve is designed to exceed the National Fire Protection Association's 1997 NFPA 8503 standard requiring valves to withstand internal explosion pressures of 50 psi (344 kPa).

Rugged Body Construction

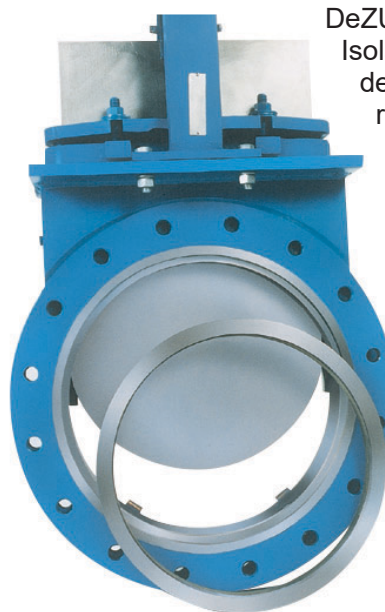
The valve body is 304 stainless steel or carbon steel. Flanges are drilled and tapped to the ASME 125/150 standard. NFPA and

Babcock & Wilcox flange drillings are also offered. Other flange drillings are available on application. Purge connections in the chest area of the valve body are an optional feature, as required on systems using steam blanketing of the process flow. The body, designed without cavities in the seat area, and the beveled gate edge, eliminate requirements for the purge connections in the seat area.

Stainless Steel Rising and Non-Rising Stems

All handwheel or chainwheel operated valves are furnished with a stainless steel stem and bronze yoke sleeve for added corrosion resistance, ease of operation and long life. The stem has single-lead threads to minimize wear and reduce the operating torque requirements of the valve. Rising stems are standard for the complete size range of the Coal Burner Isolation Valve. Where space may be limited, the 14-24" (350-600mm) manually operated valves are also offered with a non-rising stem.

Optional Removable, Rotatable Seat Ring



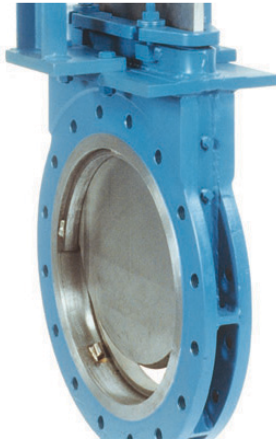
DeZURIK Coal Burner Isolation Valves are designed with the seat ring out of the flow path. The removable seat ring is held in place by a mating flange, allowing for removal or rotation as required for coal line maintenance procedures. The internal diameter of the seat ring is designed to meet or exceed the 1997 NFPA 8503 Piping Internal Diameter Requirements, assuring smooth flow

transition from the connecting pipe through the valve. Removable seat rings are available in 304 stainless steel or carbon steel. Options for abrasion resistant hard facings include chrome carbide, a cobalt chromium alloy overlay or tungsten carbide.

Explosion Pressure Rating

The DeZURIK Coal Burner Isolation Valve exceeds 1997 NFPA 8503, Article 2-6.1 50 psi (344 kPa) internal explosion pressure requirements.

Stainless Steel Gate, Guides and Jams



All valves are provided with 304 stainless steel guides for corrosion resistance. Gates are finish ground on both sides and edges to increase packing life. Gate guide provides rigid support for the moving gate. Gate jams at the bottom of the body hold the gate securely against the seat.

Choice of Actuators

DeZURIK Coal Burner Isolation Valves may be equipped with a choice of manual and powered actuators for on-off service. Actuators available include handwheel, chainwheel, 2" square nut, air cylinder and air motor. The air motor actuators are used with non-rising stems as an option where space is extremely limited. Electric motors are available on application.



Accessories

Accessories available include limit switches with rugged roller levers. These switches are standard on all air motor actuators. A variety of other accessories are also available for customizing the valve/actuator package to meet specific application requirements.

Sales and Service

For information about our worldwide locations, approvals, certifications and local representative:

Web Site: DeZURIK.com E-Mail: info@DeZURIK.com



250 Riverside Ave. N. Sartell, Minnesota 56377 • Phone: 320-259-2000 • Fax: 320-259-2227

DeZURIK, Inc. reserves the right to incorporate our latest design and material changes without notice or obligation. Design features, materials of construction and dimensional data, as described in this bulletin, are provided for your information only and should not be relied upon unless confirmed in writing by DeZURIK, Inc. Certified drawings are available upon request.